

Datasheet for ABIN7267222
anti-PSMA antibody



[Go to Product page](#)

2 Images

Overview

Quantity:	100 µL
Target:	PSMA (FOLH1)
Reactivity:	Human
Host:	Rabbit
Clonality:	Monoclonal
Conjugate:	This PSMA antibody is un-conjugated
Application:	Western Blotting (WB), Immunofluorescence (IF)

Product Details

Purpose:	PSMA/FOLH1 Rabbit mAb
Immunogen:	A synthesized peptide derived from human PSMA/FOLH1
Isotype:	IgG
Cross-Reactivity:	Human, Rat
Characteristics:	Monoclonal Antibodies
Purification:	Affinity purification

Target Details

Target:	PSMA (FOLH1)
Alternative Name:	FOLH1 (FOLH1 Products)
Background:	This gene encodes a type II transmembrane glycoprotein belonging to the M28 peptidase

Target Details

family. The protein acts as a glutamate carboxypeptidase on different alternative substrates, including the nutrient folate and the neuropeptide N-acetyl-L-aspartyl-L-glutamate and is expressed in a number of tissues such as prostate, central and peripheral nervous system and kidney. A mutation in this gene may be associated with impaired intestinal absorption of dietary folates, resulting in low blood folate levels and consequent hyperhomocysteinemia. Expression of this protein in the brain may be involved in a number of pathological conditions associated with glutamate excitotoxicity. In the prostate the protein is up-regulated in cancerous cells and is used as an effective diagnostic and prognostic indicator of prostate cancer. This gene likely arose from a duplication event of a nearby chromosomal region. Alternative splicing gives rise to multiple transcript variants encoding several different isoforms. [provided by RefSeq, Jul 2010],FGCP, FOLH, GCP2, GCPII, NAALAD1, NAALAdase, PSM, PSMA, mGCP,Amino acid metabolism,Cancer,Endocrine & Metabolism,Signal Transduction,Tumor biomarkers,FOLH1

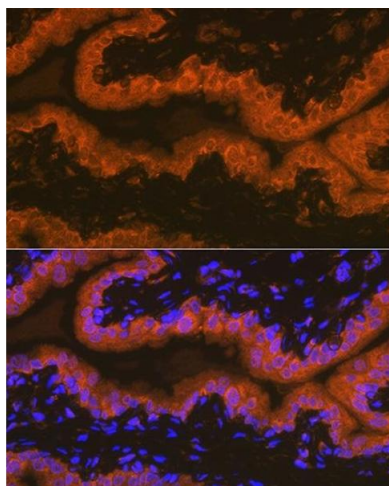
Molecular Weight:	110kDa
Gene ID:	2346
UniProt:	Q04609

Application Details

Application Notes:	WB,1:500 - 1:2000,IF,1:50 - 1:200
Restrictions:	For Research Use only

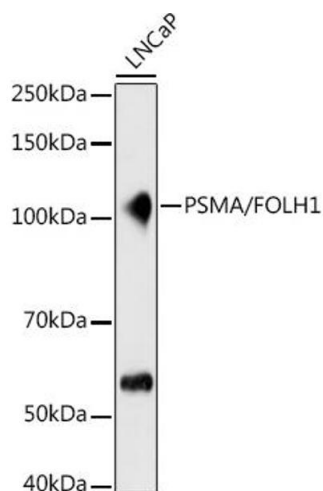
Handling

Format:	Liquid
Buffer:	PBS with 0.02 % sodium azide,0.05 % BSA,50 % glycerol, pH 7.3.
Preservative:	Sodium azide
Precaution of Use:	This product contains Sodium azide: a POISONOUS AND HAZARDOUS SUBSTANCE which should be handled by trained staff only.
Storage:	-20 °C
Storage Comment:	Store at -20°C. Avoid freeze / thaw cycles.



Immunofluorescence

Image 1. Immunofluorescence analysis of rat prostate using PSMA/FOLH1 Rabbit mAb (ABIN7267222) at dilution of 1:100 (40x lens). Blue: DAPI for nuclear staining.



Western Blotting

Image 2. Western blot analysis of extracts of LNCaP cells, using PSMA/FOLH1 antibody (ABIN7267222) at 1:500 dilution. Secondary antibody: HRP Goat Anti-Rabbit IgG (H+L) (ABIN1684268 and ABIN3020597) at 1:10000 dilution. Lysates/proteins: 25 µg per lane. Blocking buffer: 3 % nonfat dry milk in TBST. Detection: ECL Basic Kit (RM00020). Exposure time: 5s.