



[Go to Product page](#)

Datasheet for ABIN7267234

anti-FOXF1 antibody

1 Image

Overview

Quantity:	100 µL
Target:	FOXF1
Reactivity:	Human
Host:	Rabbit
Clonality:	Monoclonal
Conjugate:	This FOXF1 antibody is un-conjugated
Application:	Western Blotting (WB)

Product Details

Purpose:	FOXF1 Rabbit mAb
Immunogen:	A synthesized peptide derived from human FOXF1
Isotype:	IgG
Cross-Reactivity:	Human, Mouse
Characteristics:	Monoclonal Antibodies
Purification:	Affinity purification

Target Details

Target:	FOXF1
Alternative Name:	FOXF1 (FOXF1 Products)
Background:	This gene belongs to the forkhead family of transcription factors which is characterized by a

Target Details

distinct forkhead domain. The specific function of this gene has not yet been determined, however, it may play a role in the regulation of pulmonary genes as well as embryonic development. [provided by RefSeq, Jul 2008],ACDMPV, FKHL5, FREAC1,Epigenetics & Nuclear Signaling,Transcription Factors,FOXF1

Molecular Weight: 40kDa

Gene ID: 2294

UniProt: [Q12946](#)

Pathways: [Regulation of Leukocyte Mediated Immunity](#), [Regulation of Muscle Cell Differentiation](#), [Positive Regulation of Immune Effector Process](#)

Application Details

Application Notes: WB,1:500 - 1:2000

Restrictions: For Research Use only

Handling

Format: Liquid

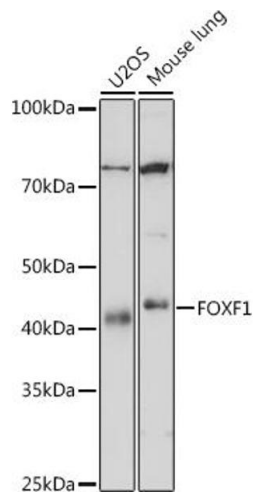
Buffer: PBS with 0.02 % sodium azide,0.05 % BSA,50 % glycerol, pH 7.3.

Preservative: Sodium azide

Precaution of Use: This product contains Sodium azide: a POISONOUS AND HAZARDOUS SUBSTANCE which should be handled by trained staff only.

Storage: -20 °C

Storage Comment: Store at -20°C. Avoid freeze / thaw cycles.



Western Blotting

Image 1. Western blot analysis of extracts of various cell lines, using FOXF1 antibody (ABIN7267234) at 1:1000 dilution. Secondary antibody: HRP Goat Anti-Rabbit IgG (H+L) (ABIN1684268 and ABIN3020597) at 1:10000 dilution. Lysates/proteins: 25 µg per lane. Blocking buffer: 3 % nonfat dry milk in TBST. Detection: ECL Basic Kit (RM00020). Exposure time: 10s.