

Datasheet for ABIN7267236
anti-FOXI1 antibody (AA 1-100)[Go to Product page](#)

1 Image

Overview

Quantity:	100 µL
Target:	FOXI1
Binding Specificity:	AA 1-100
Reactivity:	Human
Host:	Rabbit
Clonality:	Polyclonal
Conjugate:	This FOXI1 antibody is un-conjugated
Application:	Western Blotting (WB)

Product Details

Purpose:	FOXI1 Rabbit pAb
Immunogen:	A synthetic peptide corresponding to a sequence within amino acids 1-100 of human FOXI1 (NP_036320.2).
Sequence:	MSSFDLPAPS PPRCSPQFPS IGQEPPEMNL YYENFFHPQG VPSPQRPSFE GGGEYGATPN PYLWFNGPTM TPPPYPGPVN ASPFLPQAYG VQRPLLPSVS
Isotype:	IgG
Cross-Reactivity:	Mouse
Characteristics:	Polyclonal Antibodies
Purification:	Affinity purification

Target Details

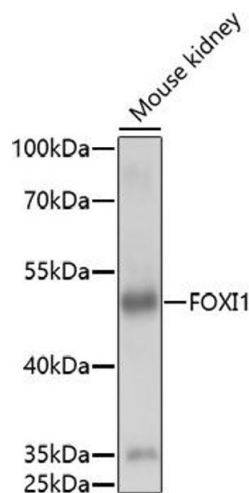
Target:	FOXI1
Alternative Name:	FOXI1 (FOXI1 Products)
Background:	This gene belongs to the forkhead family of transcription factors, which is characterized by a distinct forkhead domain. This gene may play an important role in the development of the cochlea and vestibulum, as well as in embryogenesis. The encoded protein has been found to be required for the transcription of four subunits of a proton pump found in the inner ear, the kidney, and the epididymis. Mutations in this gene have been associated with deafness, autosomal recessive 4.,FOXI1,FKH10,FKHL10,FREAC-6,FREAC6,HFH-3,HFH3,Epigenetics & Nuclear Signaling,Transcription Factors,FOXI1
Gene ID:	2299
UniProt:	Q12951

Application Details

Application Notes:	WB,1:500 - 1:2000
Restrictions:	For Research Use only

Handling

Format:	Liquid
Buffer:	PBS with 0.02 % sodium azide,50 % glycerol, pH 7.3.
Preservative:	Sodium azide
Precaution of Use:	This product contains Sodium azide: a POISONOUS AND HAZARDOUS SUBSTANCE which should be handled by trained staff only.
Storage:	-20 °C
Storage Comment:	Store at -20°C. Avoid freeze / thaw cycles.



Western Blotting

Image 1. Western blot analysis of extracts of mouse kidney, using FOXI1 antibody (ABIN7267236) at 1:1000 dilution. Secondary antibody: HRP Goat Anti-Rabbit IgG (H+L) (ABIN1684268 and ABIN3020597) at 1:10000 dilution. Lysates/proteins: 25 µg per lane. Blocking buffer: 3 % nonfat dry milk in TBST. Detection: ECL Basic Kit (RM00020). Exposure time: 10s.