



Datasheet for ABIN7267246
anti-FOXO3 antibody (pSer425)



[Go to Product page](#)

4 Images

Overview

Quantity:	100 µL
Target:	FOXO3
Binding Specificity:	pSer425
Reactivity:	Human
Host:	Rabbit
Clonality:	Polyclonal
Conjugate:	This FOXO3 antibody is un-conjugated
Application:	Western Blotting (WB), Immunohistochemistry (IHC)

Product Details

Purpose:	Phospho-FOXO3A-S425 Rabbit pAb
Immunogen:	A synthetic phosphorylated peptide around S425 of human FOXO3A.
Isotype:	IgG
Cross-Reactivity:	Human, Mouse, Rat
Characteristics:	Phosphorylated Antibodies
Purification:	Affinity purification

Target Details

Target:	FOXO3
Alternative Name:	FOXO3 (FOXO3 Products)

Target Details

Background: This gene belongs to the forkhead family of transcription factors which are characterized by a distinct forkhead domain. This gene likely functions as a trigger for apoptosis through expression of genes necessary for cell death. Translocation of this gene with the MLL gene is associated with secondary acute leukemia. Alternatively spliced transcript variants encoding the same protein have been observed. [provided by RefSeq, Jul 2008],AF6q21, FKHL1, FKHL1P2, FOXO2, FOXO3A,FOXO3

Gene ID: 2309

UniProt: [O43524](#)

Pathways: [Cell Division Cycle](#), [Fc-epsilon Receptor Signaling Pathway](#), [EGFR Signaling Pathway](#), [Neurotrophin Signaling Pathway](#), [Carbohydrate Homeostasis](#)

Application Details

Application Notes: WB,1:500 - 1:2000,IHC,1:50 - 1:200

Restrictions: For Research Use only

Handling

Format: Liquid

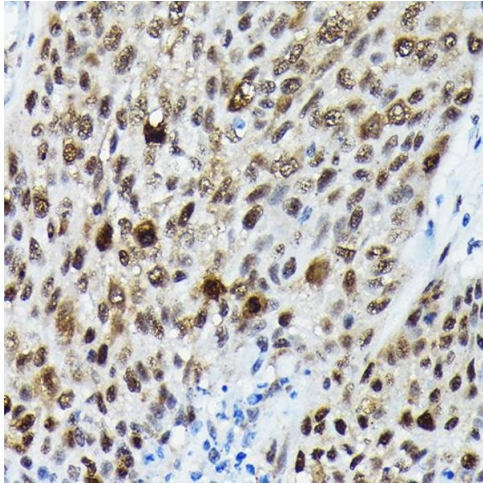
Buffer: PBS with 0.02 % sodium azide,50 % glycerol, pH 7.3.

Preservative: Sodium azide

Precaution of Use: This product contains Sodium azide: a POISONOUS AND HAZARDOUS SUBSTANCE which should be handled by trained staff only.

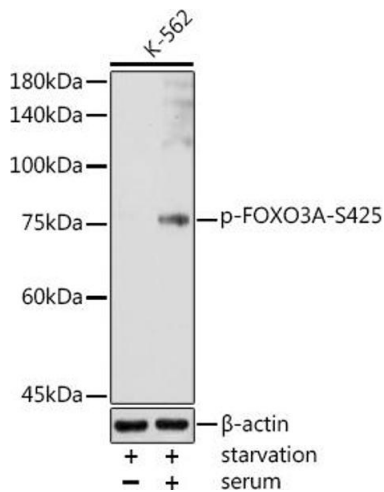
Storage: -20 °C

Storage Comment: Store at -20°C. Avoid freeze / thaw cycles.



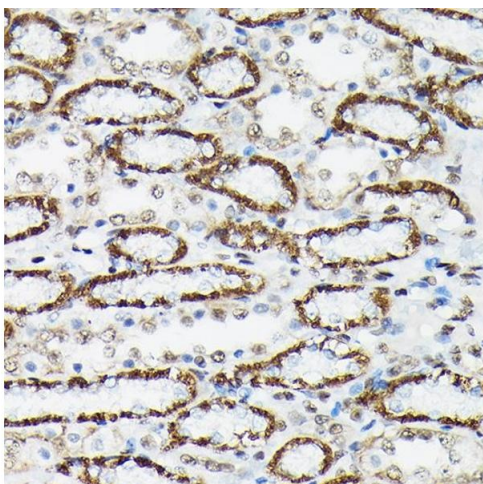
Immunohistochemistry

Image 1. Immunohistochemistry of paraffin-embedded human lung cancer using Phospho-FOXO3A-S425 Rabbit pAb (ABIN7267246) at dilution of 1:250 (40x lens). Perform high pressure antigen retrieval with 10 mM citrate buffer pH 6.0 before commencing with IHC staining protocol.



Western Blotting

Image 2. Western blot analysis of extracts of K-562 cells, using Phospho-FOXO3A-S425 antibody (ABIN7267246) at 1:1000 dilution. K-562 cells were treated by 10 % FBS at 37 °C for 30 minutes after serum-starvation overnight. Secondary antibody: HRP Goat Anti-Rabbit IgG (H+L) (ABIN1684268 and ABIN3020597) at 1:10000 dilution. Lysates/proteins: 25 µg per lane. Blocking buffer: 3 % nonfat dry milk in TBST. Detection: ECL Basic Kit (RM00020). Exposure time: 30s.



Immunohistochemistry

Image 3. Immunohistochemistry of paraffin-embedded rat kidney using Phospho-FOXO3A-S425 Rabbit pAb (ABIN7267246) at dilution of 1:250 (40x lens). Perform high pressure antigen retrieval with 10 mM citrate buffer pH 6.0 before commencing with IHC staining protocol.

Please check the [product details page](#) for more images. Overall 4 images are available for ABIN7267246.