

Datasheet for ABIN7267254

anti-FHL2 antibody**2** Images[Go to Product page](#)

Overview

Quantity:	100 µL
Target:	FHL2
Reactivity:	Human
Host:	Rabbit
Clonality:	Monoclonal
Conjugate:	This FHL2 antibody is un-conjugated
Application:	Western Blotting (WB)

Product Details

Purpose:	FHL2 Rabbit mAb
Immunogen:	A synthesized peptide derived from human FHL2
Isotype:	IgG
Cross-Reactivity:	Human, Mouse, Rat
Characteristics:	Monoclonal Antibodies
Purification:	Affinity purification

Target Details

Target:	FHL2
Alternative Name:	FHL2 (FHL2 Products)
Background:	This gene encodes a member of the four-and-a-half-LIM-only protein family. Family members

Target Details

contain two highly conserved, tandemly arranged, zinc finger domains with four highly conserved cysteines binding a zinc atom in each zinc finger. This protein is thought to have a role in the assembly of extracellular membranes. Also, this gene is down-regulated during transformation of normal myoblasts to rhabdomyosarcoma cells and the encoded protein may function as a link between presenilin-2 and an intracellular signaling pathway. Multiple alternatively spliced variants encoding different isoforms have been identified. [provided by RefSeq, Jan 2016],AAG11, DRAL, FHL-2, SLIM-3, SLIM3,Epigenetics & Nuclear Signaling,FHL2

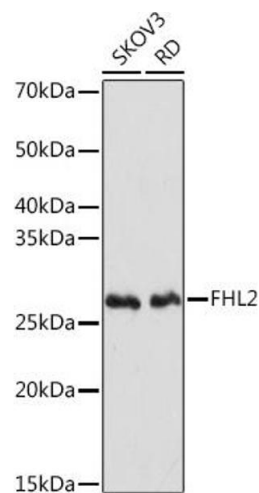
Molecular Weight:	32kDa
Gene ID:	2274
UniProt:	Q14192
Pathways:	Intracellular Steroid Hormone Receptor Signaling Pathway , Regulation of Lipid Metabolism by PPARalpha

Application Details

Application Notes:	WB,1:500 - 1:2000
Restrictions:	For Research Use only

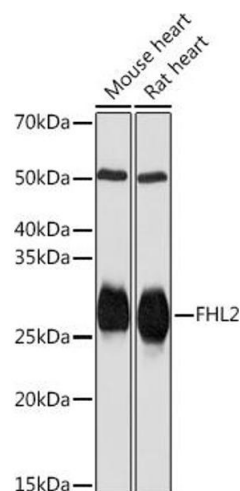
Handling

Format:	Liquid
Buffer:	PBS with 0.02 % sodium azide,0.05 % BSA,50 % glycerol, pH 7.3.
Preservative:	Sodium azide
Precaution of Use:	This product contains Sodium azide: a POISONOUS AND HAZARDOUS SUBSTANCE which should be handled by trained staff only.
Storage:	-20 °C
Storage Comment:	Store at -20°C. Avoid freeze / thaw cycles.



Western Blotting

Image 1. Western blot analysis of extracts of various cell lines, using FHL2 Rabbit mAb (ABIN7267254) at 1:1000 dilution. Secondary antibody: HRP Goat Anti-Rabbit IgG (H+L) (ABIN1684268 and ABIN3020597) at 1:10000 dilution. Lysates/proteins: 25 µg per lane. Blocking buffer: 3 % nonfat dry milk in TBST. Detection: ECL Basic Kit (RM00020). Exposure time: 3 min.



Western Blotting

Image 2. Western blot analysis of extracts of various cell lines, using FHL2 Rabbit mAb (ABIN7267254) at 1:1000 dilution. Secondary antibody: HRP Goat Anti-Rabbit IgG (H+L) (ABIN1684268 and ABIN3020597) at 1:10000 dilution. Lysates/proteins: 25 µg per lane. Blocking buffer: 3 % nonfat dry milk in TBST. Detection: ECL Basic Kit (RM00020). Exposure time: 10s.