

Datasheet for ABIN7267256
anti-FHIT antibody



[Go to Product page](#)

1 Image

Overview

Quantity:	100 µL
Target:	FHIT
Reactivity:	Human
Host:	Rabbit
Clonality:	Monoclonal
Conjugate:	This FHIT antibody is un-conjugated
Application:	Western Blotting (WB)

Product Details

Purpose:	FHIT Rabbit mAb
Immunogen:	A synthesized peptide derived from human FHIT
Isotype:	IgG
Cross-Reactivity:	Human, Mouse, Rat
Characteristics:	Monoclonal Antibodies
Purification:	Affinity purification

Target Details

Target:	FHIT
Alternative Name:	FHIT (FHIT Products)
Background:	This gene, a member of the histidine triad gene family, encodes a diadenosine 5',5'''-P1,P3-

Target Details

triphosphate hydrolase involved in purine metabolism. The gene encompasses the common fragile site FRA3B on chromosome 3, where carcinogen-induced damage can lead to translocations and aberrant transcripts of this gene. In fact, aberrant transcripts from this gene have been found in about half of all esophageal, stomach, and colon carcinomas. Alternatively spliced transcript variants have been found for this gene. [provided by RefSeq, Oct 2009],AP3Aase, FRA3B,Cancer,Epigenetics & Nuclear Signaling,Tumor suppressors,FHIT

Molecular Weight: 17kDa

Gene ID: 2272

UniProt: [P49789](#)

Application Details

Application Notes: WB,1:500 - 1:2000

Restrictions: For Research Use only

Handling

Format: Liquid

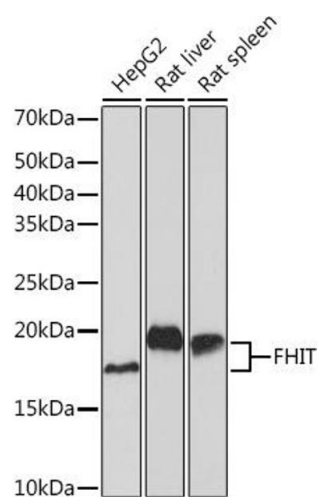
Buffer: PBS with 0.02 % sodium azide,0.05 % BSA,50 % glycerol, pH 7.3.

Preservative: Sodium azide

Precaution of Use: This product contains Sodium azide: a POISONOUS AND HAZARDOUS SUBSTANCE which should be handled by trained staff only.

Storage: -20 °C

Storage Comment: Store at -20°C. Avoid freeze / thaw cycles.



Western Blotting

Image 1. Western blot analysis of extracts of various cell lines, using FHIT Rabbit mAb (ABIN7267256) at 1:1000 dilution. Secondary antibody: HRP Goat Anti-Rabbit IgG (H+L) (ABIN1684268 and ABIN3020597) at 1:10000 dilution. Lysates/proteins: 25 µg per lane. Blocking buffer: 3 % nonfat dry milk in TBST. Detection: ECL Basic Kit (RM00020). Exposure time: 60s.