



[Go to Product page](#)

Datasheet for ABIN7267292
anti-GPR125 antibody (AA 370-600)

1 Image

Overview

Quantity:	100 µL
Target:	GPR125
Binding Specificity:	AA 370-600
Reactivity:	Human
Host:	Rabbit
Clonality:	Polyclonal
Conjugate:	This GPR125 antibody is un-conjugated
Application:	Western Blotting (WB)

Product Details

Purpose:	ADGRA3 Rabbit pAb
Immunogen:	Recombinant fusion protein containing a sequence corresponding to amino acids 370-600 of human ADGRA3 (NP_660333.2).
Sequence:	ITAYLQCTRN THGSGIYPGN PQDERKAWRR CDRGGFWADD DYSRCQYAND VTRVLYMFNQ MPLNLTNAVA TARQLLAYTV EAANFSDKMD VIFVAEMIEK FGRFTKEEKS KELGDVMVDI ASNIMLADER VLWLAQREAK ACSRIVQCLQ RIATYRLAGG AHVYSTYSPN IALEAYVIKS TGFTGMTCTV FQKVAASDRT GLSDYGRRDP EGNLDKQLSF KCNVSNTFSS L
Isotype:	IgG
Cross-Reactivity:	Mouse, Rat
Characteristics:	Polyclonal Antibodies

Product Details

Purification: Affinity purification

Target Details

Target: GPR125

Alternative Name: ADGRA3 ([GPR125 Products](#))

Background: This gene encodes a member of the G protein-coupled receptor superfamily. This membrane protein may play a role in tumor angiogenesis through its interaction with the human homolog of the Drosophila disc large tumor suppressor gene. This gene is mapped to a candidate region of chromosome 4 which may be associated with bipolar disorder and schizophrenia.,ADGRA3,GPR125,PGR21,TEM5L,Signal Transduction,G protein signaling,G-Protein-Coupled Receptors(GPCR),ADGRA3

Molecular Weight: 42kDa/68kDa/131kDa/146kDa

Gene ID: 166647

UniProt: [Q8IWK6](#)

Application Details

Application Notes: WB,1:200 - 1:2000

Restrictions: For Research Use only

Handling

Format: Liquid

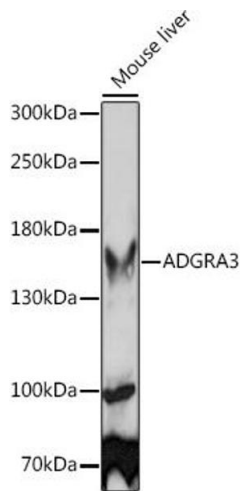
Buffer: PBS with 0.02 % sodium azide,50 % glycerol, pH 7.3.

Preservative: Sodium azide

Precaution of Use: This product contains Sodium azide: a POISONOUS AND HAZARDOUS SUBSTANCE which should be handled by trained staff only.

Storage: -20 °C

Storage Comment: Store at -20°C. Avoid freeze / thaw cycles.



Western Blotting

Image 1. Western blot analysis of extracts of Mouse liver, using Rabbit pAb (ABIN7267292) at 1:1000 dilution. Secondary antibody: HRP Goat Anti-Rabbit IgG (H+L) (ABIN1684268 and ABIN3020597) at 1:10000 dilution. Lysates/proteins: 25 µg per lane. Blocking buffer: 3 % nonfat dry milk in TBST. Detection: ECL Basic Kit (RM00020). Exposure time: 3 min.