

Datasheet for ABIN7267315
anti-GIT2 antibody (AA 450-510)[Go to Product page](#)

1 Image

Overview

Quantity:	100 µL
Target:	GIT2
Binding Specificity:	AA 450-510
Reactivity:	Human
Host:	Rabbit
Clonality:	Polyclonal
Conjugate:	This GIT2 antibody is un-conjugated
Application:	Western Blotting (WB)

Product Details

Purpose:	GIT2 Rabbit pAb
Immunogen:	Recombinant fusion protein containing a sequence corresponding to amino acids 450-510 of human GIT2 (NP_476511.1).
Sequence:	ASRLEKQNST PESDYDNTPN DMEPDGMGSS RKGRQRSMVW PGDGLVPDTA EPHVAPSPTL P
Isotype:	IgG
Cross-Reactivity:	Human
Characteristics:	Polyclonal Antibodies
Purification:	Affinity purification

Target Details

Target:	GIT2
Alternative Name:	GIT2 (GIT2 Products)
Background:	<p>This gene encodes a member of the GIT protein family, which interact with G protein-coupled receptor kinases and possess ADP-ribosylation factor (ARF) GTPase-activating protein (GAP) activity. GIT proteins traffic between cytoplasmic complexes, focal adhesions, and the cell periphery, and interact with Pak interacting exchange factor beta (PIX) to form large oligomeric complexes that transiently recruit other proteins. GIT proteins regulate cytoskeletal dynamics and participate in receptor internalization and membrane trafficking. This gene has been shown to repress lamellipodial extension and focal adhesion turnover, and is thought to regulate cell motility. This gene undergoes extensive alternative splicing to generate multiple isoforms, but the full-length nature of some of these variants has not been determined. The various isoforms have functional differences, with respect to ARF GAP activity and to G protein-coupled receptor kinase 2 binding.,GIT2,CAT-2,CAT2,PKL,Signal Transduction,G protein signaling,G-Protein-Coupled Receptors(GPCR),Kinase,Cell Biology & Developmental Biology,Cytoskeleton,Actins,GIT2</p>
Molecular Weight:	52kDa, 70-84kDa
Gene ID:	9815
UniProt:	Q14161
Pathways:	Regulation of G-Protein Coupled Receptor Protein Signaling

Application Details

Application Notes:	WB,1:200 - 1:2000
Restrictions:	For Research Use only

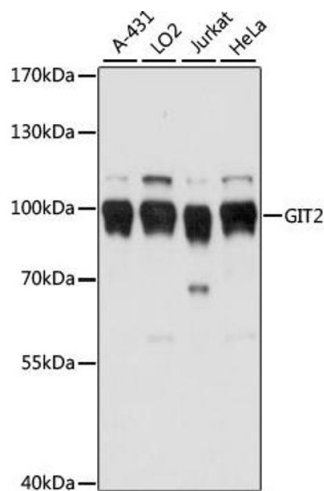
Handling

Format:	Liquid
Buffer:	PBS with 0.02 % sodium azide,50 % glycerol, pH 7.3.
Preservative:	Sodium azide
Precaution of Use:	This product contains Sodium azide: a POISONOUS AND HAZARDOUS SUBSTANCE which should be handled by trained staff only.
Storage:	-20 °C

Handling

Storage Comment: Store at -20°C. Avoid freeze / thaw cycles.

Images



Western Blotting

Image 1. Western blot analysis of extracts of various cell lines, using GIT2 antibody (ABIN7267315) at 1:1000 dilution. Secondary antibody: HRP Goat Anti-Rabbit IgG (H+L) (ABIN1684268 and ABIN3020597) at 1:10000 dilution. Lysates/proteins: 25 µg per lane. Blocking buffer: 3 % nonfat dry milk in TBST. Detection: ECL Basic Kit (RM00020). Exposure time: 1 s.