



[Go to Product page](#)

Datasheet for ABIN7267321
anti-GSPT1 antibody (AA 138-420)

1 Image

Overview

Quantity:	100 µL
Target:	GSPT1
Binding Specificity:	AA 138-420
Reactivity:	Human
Host:	Rabbit
Clonality:	Polyclonal
Conjugate:	This GSPT1 antibody is un-conjugated
Application:	Western Blotting (WB)

Product Details

Purpose:	GSPT1 Rabbit pAb
Immunogen:	Recombinant fusion protein containing a sequence corresponding to amino acids 138-420 of human GSPT1 (NP_001123478.1).
Sequence:	SMELSEPIEN GETEMSPEES WEHKEEISEA EPGGGSLGDG RPPEESAHEM MEEEEIIPKP KSVVAPPGAP KKEHVNVVFI GHVDAGKSTI GGQIMYLTGM VDKRTLEKYE REAKEKNRET WYLSWALDTN QEERDKGKTV EVGRAYFETE KKHFTILDAP GHKSFVPNMI GGASQADLAV LVISARKGEF ETGFEEKGGQT REHAMLAKTA GVKHLIVLIN KMDDPTVNWS NERYEECKEK LVPFLKKVGF NPKKDIHFMP CSGLTGANLK EQSDFCPWYI GLP
Isotype:	IgG
Cross-Reactivity:	Human, Mouse, Rat
Characteristics:	Polyclonal Antibodies

Product Details

Purification: Affinity purification

Target Details

Target: GSPT1

Alternative Name: GSPT1 ([GSPT1 Products](#))

Background: Involved in translation termination in response to the termination codons UAA, UAG and UGA (By similarity. Stimulates the activity of ETF1 (By similarity. Involved in regulation of mammalian cell growth. Component of the transient SURF complex which recruits UPF1 to stalled ribosomes in the context of nonsense-mediated decay (NMD of mRNAs containing premature stop codons. Required for SHFL-mediated translation termination which inhibits programmed ribosomal frameshifting (-1PRF of mRNA from viruses and cellular genes.,GSPT1,551G9.2,ETF3A,GST1,eRF3a,Epigenetics & Nuclear Signaling,RNA Binding,GSPT1

Molecular Weight: 55kDa/68kDa

Gene ID: 2935

UniProt: [P15170](#)

Application Details

Application Notes: WB,1:500 - 1:2000

Restrictions: For Research Use only

Handling

Format: Liquid

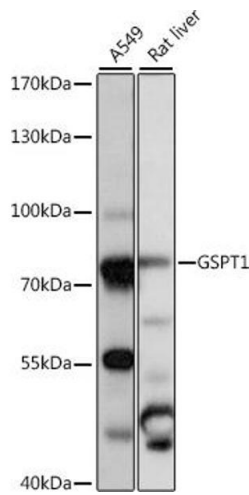
Buffer: PBS with 0.02 % sodium azide,50 % glycerol, pH 7.3.

Preservative: Sodium azide

Precaution of Use: This product contains Sodium azide: a POISONOUS AND HAZARDOUS SUBSTANCE which should be handled by trained staff only.

Storage: -20 °C

Storage Comment: Store at -20°C. Avoid freeze / thaw cycles.



Western Blotting

Image 1. Western blot analysis of extracts of various cell lines, using GSPT1 antibody (ABIN7267321) at 1:1000 dilution. Secondary antibody: HRP Goat Anti-Rabbit IgG (H+L) (ABIN1684268 and ABIN3020597) at 1:10000 dilution. Lysates/proteins: 25 µg per lane. Blocking buffer: 3 % nonfat dry milk in TBST. Detection: ECL Basic Kit (RM00020). Exposure time: 1s.