



[Go to Product page](#)

Datasheet for ABIN7267326
anti-GABARAPL2 antibody

1 Image

Overview

Quantity:	100 µL
Target:	GABARAPL2
Reactivity:	Human
Host:	Rabbit
Clonality:	Monoclonal
Conjugate:	This GABARAPL2 antibody is un-conjugated
Application:	Western Blotting (WB)

Product Details

Purpose:	GABARAPL2 Rabbit mAb
Immunogen:	A synthesized peptide derived from human GABARAPL2
Isotype:	IgG
Cross-Reactivity:	Human, Mouse, Rat
Characteristics:	Monoclonal Antibodies
Purification:	Affinity purification

Target Details

Target:	GABARAPL2
Alternative Name:	GABARAPL2 (GABARAPL2 Products)
Background:	Ubiquitin-like modifier involved in intra-Golgi traffic (By similarity. Modulates intra-Golgi

Target Details

transport through coupling between NSF activity and SNAREs activation (By similarity. It first stimulates the ATPase activity of NSF which in turn stimulates the association with GOSR1 (By similarity. Involved in autophagy. Plays a role in mitophagy which contributes to regulate mitochondrial quantity and quality by eliminating the mitochondria to a basal level to fulfill cellular energy requirements and preventing excess ROS production. Whereas LC3s are involved in elongation of the phagophore membrane, the GABARAP/GATE-16 subfamily is essential for a later stage in autophagosome maturation.,ATG8, ATG8C, GATE-16, GATE16, GEF-2, GEF2, Autophagy, Autophagy_Regulator, Cancer, Cell Biology & Developmental Biology, Endocrine & Metabolism, Mitochondrial metabolism, Signal Transduction, GABARAPL2

Molecular Weight: 14kDa

Gene ID: 11345

UniProt: [P60520](#)

Pathways: [Autophagy](#)

Application Details

Application Notes: WB, 1:500 - 1:2000

Restrictions: For Research Use only

Handling

Format: Liquid

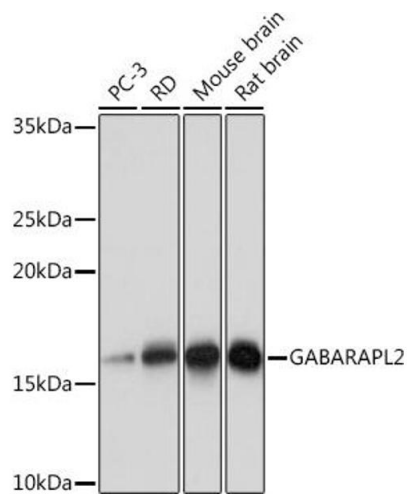
Buffer: PBS with 0.02 % sodium azide, 0.05 % BSA, 50 % glycerol, pH 7.3.

Preservative: Sodium azide

Precaution of Use: This product contains Sodium azide: a POISONOUS AND HAZARDOUS SUBSTANCE which should be handled by trained staff only.

Storage: -20 °C

Storage Comment: Store at -20°C. Avoid freeze / thaw cycles.



Western Blotting

Image 1. Western blot analysis of extracts of various cell lines, using G Rabbit mAb (ABIN7267326) at 1:1000 dilution. Secondary antibody: HRP Goat Anti-Rabbit IgG (H+L) (ABIN1684268 and ABIN3020597) at 1:10000 dilution. Lysates/proteins: 25 µg per lane. Blocking buffer: 3% nonfat dry milk in TBST. Detection: ECL Basic Kit (RM00020). Exposure time: 10s.