



[Go to Product page](#)

Datasheet for ABIN7267328  
**anti-GALK1 antibody (AA 1-120)**

1 Image

Overview

Quantity:	100 µL
Target:	GALK1
Binding Specificity:	AA 1-120
Reactivity:	Human
Host:	Rabbit
Clonality:	Polyclonal
Conjugate:	This GALK1 antibody is un-conjugated
Application:	Western Blotting (WB)

Product Details

Purpose:	GALK1 Rabbit pAb
Immunogen:	Recombinant fusion protein containing a sequence corresponding to amino acids 1-120 of human GALK1 (NP_000145.1).
Sequence:	MAALRQPQVA ELLAEARRAF REEFGAEPPEL AVSAPGRVNL IGEHTDYNQG LVLPMALELM TVLVGSPRKD GLVSLTTSE GADEPQRLQF PLPTAQRSLE PGTPRWANYV KGVIQYYPAA
Isotype:	IgG
Cross-Reactivity:	Human, Mouse
Characteristics:	Polyclonal Antibodies
Purification:	Affinity purification

## Target Details

---

Target:	GALK1
Alternative Name:	GALK1 ( <a href="#">GALK1 Products</a> )
Background:	Galactokinase is a major enzyme for the metabolism of galactose and its deficiency causes congenital cataracts during infancy and presenile cataracts in the adult population.,GALK1,GALK,GK1,HEL-S-19,Epigenetics & Nuclear Signaling,Cancer,Signal Transduction,Kinase,Cell Biology & Developmental Biology,Cell Cycle,Endocrine & Metabolism,Carbohydrate metabolism,GALK1
Molecular Weight:	42kDa/45kDa
Gene ID:	2584
UniProt:	<a href="#">P51570</a>

## Application Details

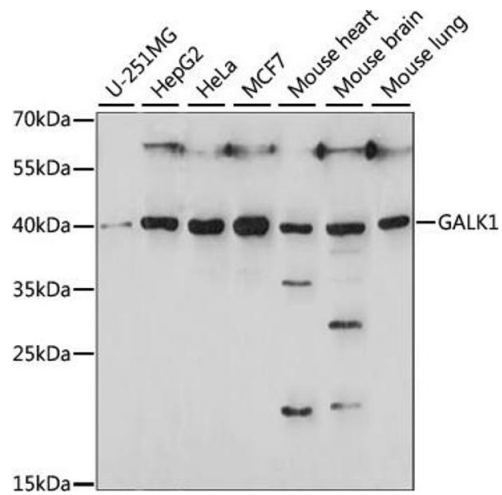
---

Application Notes:	WB,1:200 - 1:2000
Restrictions:	For Research Use only

## Handling

---

Format:	Liquid
Buffer:	PBS with 0.02 % sodium azide,50 % glycerol, pH 7.3.
Preservative:	Sodium azide
Precaution of Use:	This product contains Sodium azide: a POISONOUS AND HAZARDOUS SUBSTANCE which should be handled by trained staff only.
Storage:	-20 °C
Storage Comment:	Store at -20°C. Avoid freeze / thaw cycles.



### Western Blotting

**Image 1.** Western blot analysis of extracts of various cell lines, using G antibody (ABIN7267328) at 1:1000 dilution. Secondary antibody: HRP Goat Anti-Rabbit IgG (H+L) (ABIN1684268 and ABIN3020597) at 1:10000 dilution. Lysates/proteins: 25 µg per lane. Blocking buffer: 3 % nonfat dry milk in TBST. Detection: ECL Basic Kit (RM00020). Exposure time: 60S.