

Datasheet for ABIN7267333  
**anti-GLA antibody**



[Go to Product page](#)

1 Image

## Overview

Quantity:	100 µL
Target:	GLA
Reactivity:	Human
Host:	Rabbit
Clonality:	Monoclonal
Conjugate:	This GLA antibody is un-conjugated
Application:	Western Blotting (WB)

## Product Details

Purpose:	Galactosidase alpha (GLA) Rabbit mAb
Immunogen:	A synthesized peptide derived from human Galactosidase alpha (GLA) (GLA)
Isotype:	IgG
Cross-Reactivity:	Human, Mouse, Rat
Characteristics:	Monoclonal Antibodies
Purification:	Affinity purification

## Target Details

Target:	GLA
Alternative Name:	GLA ( <a href="#">GLA Products</a> )
Background:	This gene encodes a homodimeric glycoprotein that hydrolyses the terminal alpha-galactosyl

## Target Details

moieties from glycolipids and glycoproteins. This enzyme predominantly hydrolyzes ceramide trihexoside, and it can catalyze the hydrolysis of melibiose into galactose and glucose. A variety of mutations in this gene affect the synthesis, processing, and stability of this enzyme, which causes Fabry disease, a rare lysosomal storage disorder that results from a failure to catabolize alpha-D-galactosyl glycolipid moieties. [provided by RefSeq, Jul 2008],GALA,Blood,Blood\_Blood Cell Antigens,Cardiovascular,GLA

Molecular Weight: 46kDa

Gene ID: 2717

UniProt: [P06280](#)

Pathways: [SARS-CoV-2 Protein Interactome](#)

## Application Details

Application Notes: WB,1:500 - 1:2000

Restrictions: For Research Use only

## Handling

Format: Liquid

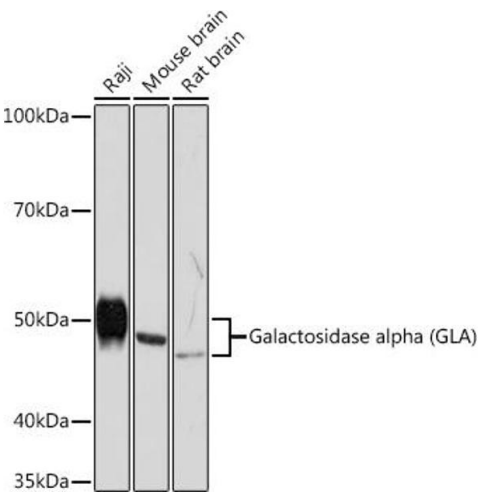
Buffer: PBS with 0.02 % sodium azide,0.05 % BSA,50 % glycerol, pH 7.3.

Preservative: Sodium azide

Precaution of Use: This product contains Sodium azide: a POISONOUS AND HAZARDOUS SUBSTANCE which should be handled by trained staff only.

Storage: -20 °C

Storage Comment: Store at -20°C. Avoid freeze / thaw cycles.



Western Blotting

**Image 1.** Western blot analysis of extracts of various cell lines, using Galactosidase alpha (GLA) (GLA) Rabbit mAb (ABIN7267333) at 1:1000 dilution. Secondary antibody: HRP Goat Anti-Rabbit IgG (H+L) (ABIN1684268 and ABIN3020597) at 1:10000 dilution. Lysates/proteins: 25 µg per lane. Blocking buffer: 3 % nonfat dry milk in TBST. Detection: ECL Basic Kit (RM00020). Exposure time: 3 min.