



[Go to Product page](#)

Datasheet for ABIN7267337
anti-Galectin 3 antibody

6 Images

Overview

Quantity:	100 µL
Target:	Galectin 3 (LGALS3)
Reactivity:	Human
Host:	Rabbit
Clonality:	Monoclonal
Conjugate:	This Galectin 3 antibody is un-conjugated
Application:	Western Blotting (WB), Immunohistochemistry (IHC), Immunoprecipitation (IP)

Product Details

Purpose:	Galectin 3/LGALS3 Rabbit mAb
Immunogen:	A synthesized peptide derived from human Galectin 3/LGALS3
Isotype:	IgG
Cross-Reactivity:	Human, Mouse, Rat
Characteristics:	Monoclonal Antibodies
Purification:	Affinity purification

Target Details

Target:	Galectin 3 (LGALS3)
Alternative Name:	LGALS3 (LGALS3 Products)
Target Type:	Chemical

Target Details

Background: This gene encodes a member of the galectin family of carbohydrate binding proteins. Members of this protein family have an affinity for beta-galactosides. The encoded protein is characterized by an N-terminal proline-rich tandem repeat domain and a single C-terminal carbohydrate recognition domain. This protein can self-associate through the N-terminal domain allowing it to bind to multivalent saccharide ligands. This protein localizes to the extracellular matrix, the cytoplasm and the nucleus. This protein plays a role in numerous cellular functions including apoptosis, innate immunity, cell adhesion and T-cell regulation. The protein exhibits antimicrobial activity against bacteria and fungi. Alternate splicing results in multiple transcript variants.[provided by RefSeq, Oct 2014],CBP35, GAL3, GALBP, GALIG, L31, LGALS2, MAC2,Cell Adhesion,Cell Biology & Developmental Biology,Cell Cycle,Cell Cycle_Cell differentiation,Epigenetics & Nuclear Signaling,Neuroscience,RNA Binding,LGALS3

Molecular Weight: 30kDa

Gene ID: 3958

UniProt: [P17931](#)

Pathways: [RTK Signaling](#)

Application Details

Application Notes: WB,1:500 - 1:2000,IHC,1:50 - 1:200,IP,1:50 - 1:200

Restrictions: For Research Use only

Handling

Format: Liquid

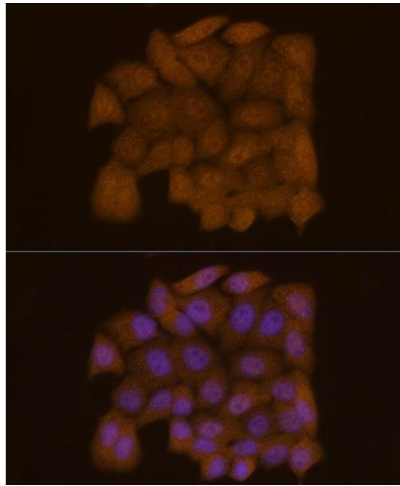
Buffer: PBS with 0.02 % sodium azide,0.05 % BSA,50 % glycerol, pH 7.3.

Preservative: Sodium azide

Precaution of Use: This product contains Sodium azide: a POISONOUS AND HAZARDOUS SUBSTANCE which should be handled by trained staff only.

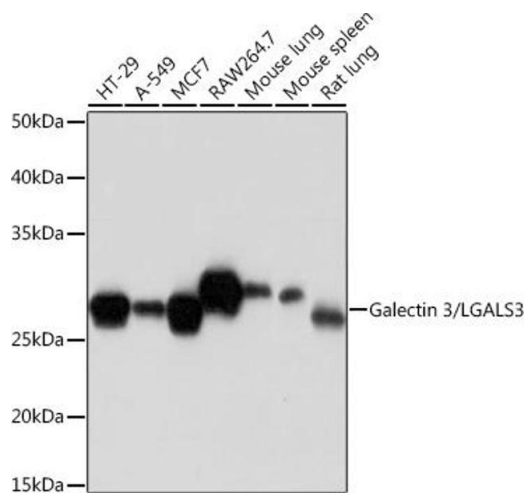
Storage: -20 °C

Storage Comment: Store at -20°C. Avoid freeze / thaw cycles.



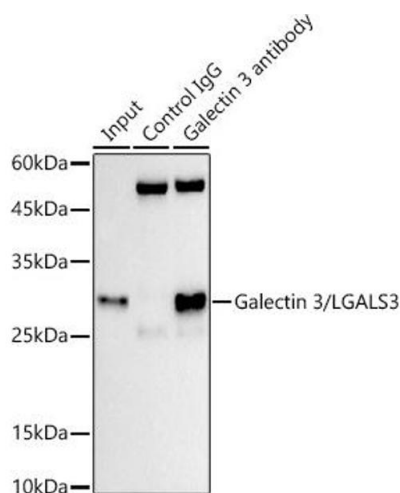
Immunofluorescence

Image 1. Immunofluorescence analysis of HeLa cells using Galectin 3/LG Rabbit mAb (ABIN7267337) at dilution of 1:50 (40x lens). Blue: DAPI for nuclear staining.



Western Blotting

Image 2. Western blot analysis of extracts of various cell lines, using Galectin 3/LG Rabbit mAb (ABIN7267337) at 1:1000 dilution. Secondary antibody: HRP Goat Anti-Rabbit IgG (H+L) (ABIN1684268 and ABIN3020597) at 1:10000 dilution. Lysates/proteins: 25 µg per lane. Blocking buffer: 3 % nonfat dry milk in TBST. Detection: ECL Basic Kit (RM00020). Exposure time: 10s.



Immunoprecipitation

Image 3. Immunoprecipitation analysis of 300 µg extracts of HT-29 cells using 3 µg Galectin 3/LG antibody (ABIN7267337). Western blot was performed from the immunoprecipitate using Galectin 3/LG antibody (ABIN7267337) at a dilution of 1:1000.

Please check the [product details page](#) for more images. Overall 6 images are available for ABIN7267337.