

Datasheet for ABIN7267338
anti-Galectin 3 antibody (AA 1-250)



[Go to Product page](#)

7 Images

Overview

Quantity:	100 µL
Target:	Galectin 3 (LGALS3)
Binding Specificity:	AA 1-250
Reactivity:	Human
Host:	Rabbit
Clonality:	Polyclonal
Conjugate:	This Galectin 3 antibody is un-conjugated
Application:	Western Blotting (WB), Immunohistochemistry (IHC), Immunofluorescence (IF)

Product Details

Purpose:	Galectin 3/LGALS3 Rabbit pAb
Immunogen:	Recombinant fusion protein containing a sequence corresponding to amino acids 1-250 of human Galectin 3/Galectin 3/LGALS3 (NP_002297.2).
Sequence:	MADNFSLHDA LSGSGNPNPQ GWPGAWGNQP AGAGGYPGAS YPGAYPGQAP PGAYPGQAPP GAYPGAPGAY PGAPAPGVYP GPPSGPGAYP SSGQPSATGA YPATGPYGAP AGPLIVPYNL PLPGGVVPRM LITILGTVKP NANRIALDFQ RGNDVAFHFN PRFNENRRV IVCNTKLDNN WGREERQSVF PFESGKPFKI QVLVEPDHFK VAVNDAHLLQ YNHRVKKLNE ISKLGISGDI DLTSASYTMI
Isotype:	IgG
Cross-Reactivity:	Human, Mouse, Rat
Characteristics:	Polyclonal Antibodies

Product Details

Purification: Affinity purification

Target Details

Target: Galectin 3 (LGALS3)

Alternative Name: LGALS3 ([LGALS3 Products](#))

Target Type: Chemical

Background: This gene encodes a member of the galectin family of carbohydrate binding proteins. Members of this protein family have an affinity for beta-galactosides. The encoded protein is characterized by an N-terminal proline-rich tandem repeat domain and a single C-terminal carbohydrate recognition domain. This protein can self-associate through the N-terminal domain allowing it to bind to multivalent saccharide ligands. This protein localizes to the extracellular matrix, the cytoplasm and the nucleus. This protein plays a role in numerous cellular functions including apoptosis, innate immunity, cell adhesion and T-cell regulation. The protein exhibits antimicrobial activity against bacteria and fungi. Alternate splicing results in multiple transcript variants.,LGALS3,CBP35,GAL3,GALBP,GALIG,L31,LGALS2,MAC2,Epigenetics & Nuclear Signaling,RNA Binding,Cell Biology & Developmental Biology,Cell Cycle,Cell differentiation,Cell Adhesion,Neuroscience,LGALS3

Molecular Weight: 26kDa

Gene ID: 3958

UniProt: [P17931](#)

Pathways: [RTK Signaling](#)

Application Details

Application Notes: WB,1:500 - 1:2000,IHC,1:50 - 1:200,IF,1:50 - 1:200

Restrictions: For Research Use only

Handling

Format: Liquid

Buffer: PBS with 0.02 % sodium azide,50 % glycerol, pH 7.3.

Preservative: Sodium azide

Precaution of Use: This product contains Sodium azide: a POISONOUS AND HAZARDOUS SUBSTANCE which

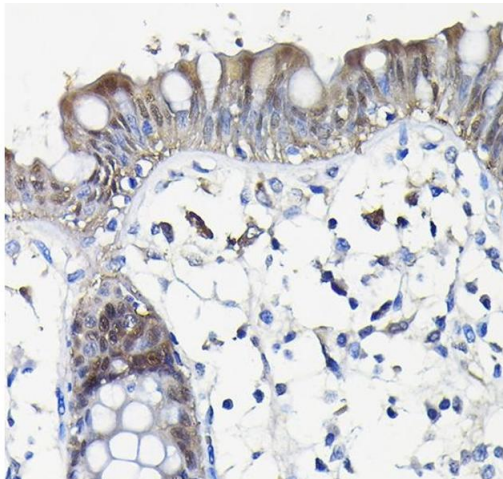
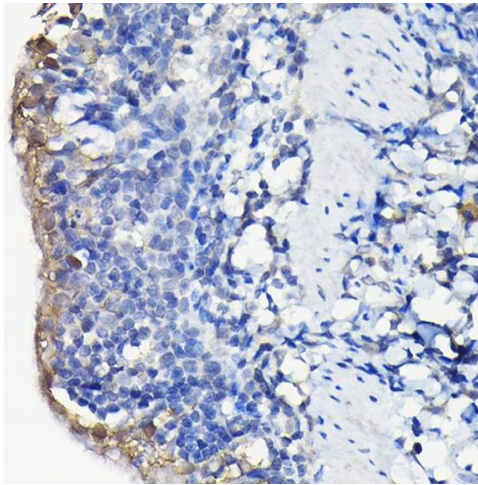
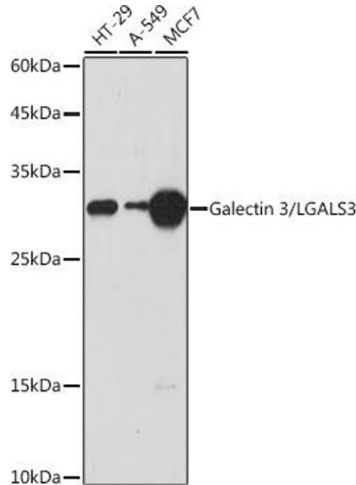
Handling

should be handled by trained staff only.

Storage: -20 °C

Storage Comment: Store at -20°C. Avoid freeze / thaw cycles.

Images



Western Blotting

Image 1. Western blot analysis of extracts of various cell lines, using Galectin 3/Galectin 3/LG antibody (ABIN7267338) at 1:1000 dilution. Secondary antibody: HRP Goat Anti-Rabbit IgG (H+L) (ABIN1684268 and ABIN3020597) at 1:10000 dilution. Lysates/proteins: 25 µg per lane. Blocking buffer: 3% nonfat dry milk in TBST. Detection: ECL Basic Kit (RM00020). Exposure time: 30s.

Immunohistochemistry

Image 2. Immunohistochemistry of paraffin-embedded rat lung using Galectin 3/Galectin 3/LG Rabbit pAb (ABIN7267338) at dilution of 1:100 (40x lens). Perform high pressure antigen retrieval with 10 mM citrate buffer pH 6.0 before commencing with IHC staining protocol.

Immunohistochemistry

Image 3. Immunohistochemistry of paraffin-embedded human colon using Galectin 3/Galectin 3/LG Rabbit pAb (ABIN7267338) at dilution of 1:100 (40x lens). Perform high pressure antigen retrieval with 10 mM citrate buffer pH 6.0 before commencing with IHC staining protocol.

Images

Please check the [product details page](#) for more images. Overall 7 images are available for ABIN7267338.