



[Go to Product page](#)

Datasheet for ABIN7267339
anti-GAL4 antibody (AA 1-100)

3 Images

Overview

Quantity:	100 µL
Target:	GAL4 (LGALS4)
Binding Specificity:	AA 1-100
Reactivity:	Human
Host:	Rabbit
Clonality:	Polyclonal
Conjugate:	This GAL4 antibody is un-conjugated
Application:	Western Blotting (WB), Immunofluorescence (IF)

Product Details

Purpose:	Galectin 4/LGALS4 Rabbit pAb
Immunogen:	Recombinant fusion protein containing a sequence corresponding to amino acids 1-100 of human Galectin 4/LGALS4 (NP_006140.1).
Sequence:	MAYVPAPGYQ PTYNPTLPYY QPIPGGLNVG MSVYIQGVAS EHMKRFFVNF VVQDPGSDV AFHFNPRFDG WDKVVFNTLQ GKGWSEERK RSMPFKKGAA
Isotype:	IgG
Cross-Reactivity:	Human, Mouse, Rat
Characteristics:	Polyclonal Antibodies
Purification:	Affinity purification

Target Details

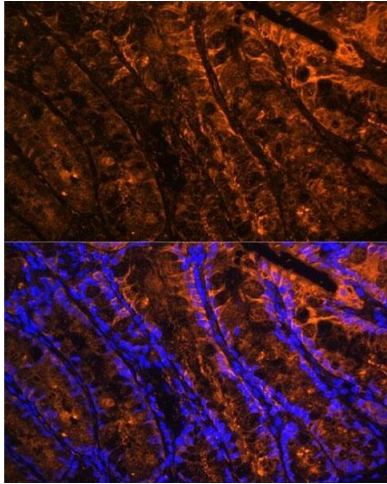
Target:	GAL4 (LGALS4)
Alternative Name:	LGALS4 (LGALS4 Products)
Background:	The galectins are a family of beta-galactoside-binding proteins implicated in modulating cell-cell and cell-matrix interactions. The expression of this gene is restricted to small intestine, colon, and rectum, and it is underexpressed in colorectal cancer.,GAL4,L36LBP,LGALS4,Epigenetics & Nuclear Signaling,Transcription Factors,Signal Transduction,Cell Biology & Developmental Biology,Cell Adhesion,Gap Junctions,Cytoskeleton,Endocrine & Metabolism,LGALS4
Molecular Weight:	36kDa
Gene ID:	3960
UniProt:	P56470

Application Details

Application Notes:	WB,1:500 - 1:2000,IF,1:50 - 1:100
Restrictions:	For Research Use only

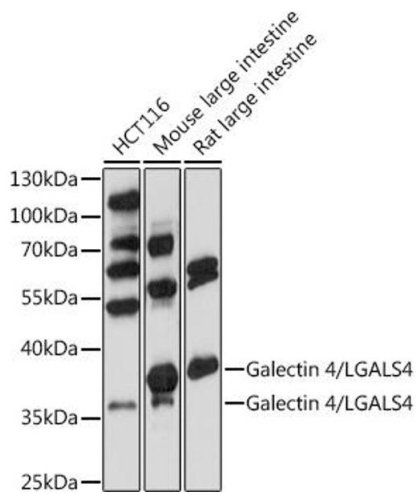
Handling

Format:	Liquid
Buffer:	PBS with 0.02 % sodium azide,50 % glycerol, pH 7.3.
Preservative:	Sodium azide
Precaution of Use:	This product contains Sodium azide: a POISONOUS AND HAZARDOUS SUBSTANCE which should be handled by trained staff only.
Storage:	-20 °C
Storage Comment:	Store at -20°C. Avoid freeze / thaw cycles.



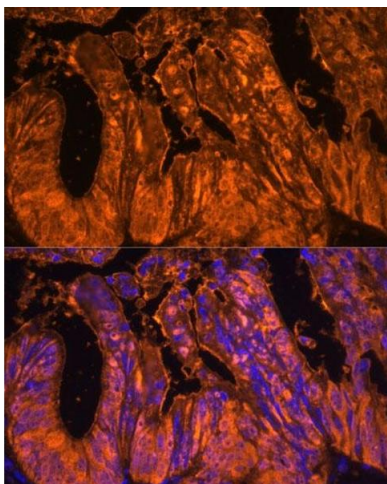
Immunofluorescence

Image 1. Immunofluorescence analysis of mouse colon using Galectin 4/LG Polyclonal Antibody (ABIN7267339) at dilution of 1:100 (40x lens). Blue: DAPI for nuclear staining.



Western Blotting

Image 2. Western blot analysis of extracts of various cells, using Galectin 4/LG antibody (ABIN7267339) at 1:1000 dilution. Secondary antibody: HRP Goat Anti-Rabbit IgG (H+L) (ABIN1684268 and ABIN3020597) at 1:10000 dilution. Lysates/proteins: 25 µg per lane. Blocking buffer: 3 % nonfat dry milk in TBST. Detection: ECL Basic Kit (RM00020). Exposure time: 30s.



Immunofluorescence

Image 3. Immunofluorescence analysis of human colon carcinoma using Galectin 4/LG Polyclonal Antibody (ABIN7267339) at dilution of 1:100 (40x lens). Blue: DAPI for nuclear staining.