



Datasheet for ABIN7267342  
**anti-GABRB2 antibody**



[Go to Product page](#)

1 Image

Overview

Quantity:	100 µL
Target:	GABRB2
Reactivity:	Human
Host:	Rabbit
Clonality:	Monoclonal
Conjugate:	This GABRB2 antibody is un-conjugated
Application:	Western Blotting (WB)

Product Details

Purpose:	GABA A Receptor beta 2 (GABRB2) Rabbit mAb
Immunogen:	A synthesized peptide derived from human GABA A Receptor beta 2 (GABRB2) (GABRB2)
Isotype:	IgG
Cross-Reactivity:	Human, Mouse, Rat
Characteristics:	Monoclonal Antibodies
Purification:	Affinity purification

Target Details

Target:	GABRB2
Alternative Name:	GABRB2 ( <a href="#">GABRB2 Products</a> )
Background:	The gamma-aminobutyric acid (GABA) A receptor is a multisubunit chloride channel that

## Target Details

---

mediates the fastest inhibitory synaptic transmission in the central nervous system. This gene encodes GABA A receptor, beta 2 subunit. It is mapped to chromosome 5q34 in a cluster comprised of genes encoding alpha 1 and gamma 2 subunits of the GABA A receptor. Alternative splicing of this gene generates 2 transcript variants, differing by a 114 bp insertion. [provided by RefSeq, Jul 2008],GABRB2, gamma-aminobutyric acid receptor subunit beta-2,Neuroscience,GABRB2

---

Molecular Weight: 59kDa

---

Gene ID: 2561

---

UniProt: [P47870](#)

---

Pathways: [Sensory Perception of Sound, Synaptic Membrane](#)

## Application Details

---

---

Application Notes: WB,1:500 - 1:2000

---

Restrictions: For Research Use only

## Handling

---

---

Format: Liquid

---

Buffer: PBS with 0.02 % sodium azide,0.05 % BSA,50 % glycerol, pH 7.3.

---

Preservative: Sodium azide

---

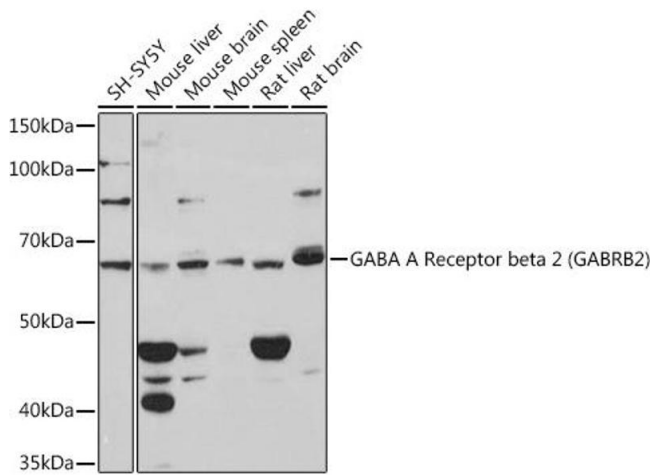
Precaution of Use: This product contains Sodium azide: a POISONOUS AND HAZARDOUS SUBSTANCE which should be handled by trained staff only.

---

Storage: -20 °C

---

Storage Comment: Store at -20°C. Avoid freeze / thaw cycles.



### Western Blotting

**Image 1.** Western blot analysis of extracts of various cell lines, using GABA A Receptor beta 2 (G) (G) Rabbit mAb (ABIN7267342) at 1:1000 dilution. Secondary antibody: HRP Goat Anti-Rabbit IgG (H+L) (ABIN1684268 and ABIN3020597) at 1:10000 dilution. Lysates/proteins: 25 µg per lane. Blocking buffer: 3 % nonfat dry milk in TBST. Detection: ECL Basic Kit (RM00020). Exposure time: 10s.