



[Go to Product page](#)

Datasheet for ABIN7267355
anti-GBX2 antibody (AA 1-250)

1 Image

Overview

Quantity:	100 µL
Target:	GBX2
Binding Specificity:	AA 1-250
Reactivity:	Human
Host:	Rabbit
Clonality:	Polyclonal
Conjugate:	This GBX2 antibody is un-conjugated
Application:	Western Blotting (WB)

Product Details

Purpose:	GBX2 Rabbit pAb
Immunogen:	Recombinant fusion protein containing a sequence corresponding to amino acids 1-250 of human GBX2 (NP_001476.2).
Sequence:	MSAAFPPSLM MMQRPLGSST AFSIDSLIGS PPQPSPGHFV YTGYPMFMPY RPVVLPPPPP PPPALPQAAL QPALPPAHPH HQIPSLPTGF CSSLAQGMAL TSTLMATLPG GFSASPQHQE AAAARKFAPQ PLPGGGNFDK AEALQADAED GKGFLAKEGS LLAFAAETV QASLVGAVRG QGKDESKVED DPKGKEESFS LESVDVYSSD DNLTGQAAHK EEDPGHALEE TPPSSGAAGS TTSTGKNRRR
Isotype:	IgG
Cross-Reactivity:	Human, Mouse, Rat
Characteristics:	Polyclonal Antibodies

Product Details

Purification: Affinity purification

Target Details

Target: GBX2

Alternative Name: GBX2 ([GBX2 Products](#))

Background: May act as a transcription factor for cell pluripotency and differentiation in the embryo.,GBX2,Epigenetics & Nuclear Signaling,Transcription Factors,Neuroscience,Cardiovascular,Angiogenesis,GBX2

Molecular Weight: 37kDa

Gene ID: 2637

UniProt: [P52951](#)

Pathways: [Dopaminergic Neurogenesis](#)

Application Details

Application Notes: WB,1:500 - 1:2000

Restrictions: For Research Use only

Handling

Format: Liquid

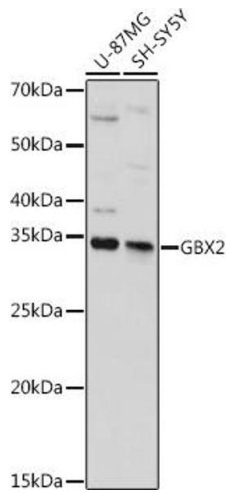
Buffer: PBS with 0.02 % sodium azide,50 % glycerol, pH 7.3.

Preservative: Sodium azide

Precaution of Use: This product contains Sodium azide: a POISONOUS AND HAZARDOUS SUBSTANCE which should be handled by trained staff only.

Storage: -20 °C

Storage Comment: Store at -20°C. Avoid freeze / thaw cycles.



Western Blotting

Image 1. Western blot analysis of extracts of various cell lines, using GBX2 antibody (ABIN7267355) at 1:1000 dilution. Secondary antibody: HRP Goat Anti-Rabbit IgG (H+L) (ABIN1684268 and ABIN3020597) at 1:10000 dilution. Lysates/proteins: 25 µg per lane. Blocking buffer: 3 % nonfat dry milk in TBST. Detection: ECL Basic Kit (RM00020). Exposure time: 10s.