



[Go to Product page](#)

Datasheet for ABIN7267366

## anti-SIP1 antibody

### 3 Images

#### Overview

Quantity:	100 µL
Target:	SIP1 (GEMIN2)
Reactivity:	Human
Host:	Rabbit
Clonality:	Monoclonal
Conjugate:	This SIP1 antibody is un-conjugated
Application:	Western Blotting (WB), Immunohistochemistry (IHC)

#### Product Details

Purpose:	Gemin 2 Rabbit mAb
Immunogen:	Recombinant protein of human Gemin 2 .
Isotype:	IgG
Cross-Reactivity:	Human, Mouse, Rat
Characteristics:	Monoclonal Antibodies
Purification:	Affinity purification

#### Target Details

Target:	SIP1 (GEMIN2)
Alternative Name:	Gemin 2 ( <a href="#">GEMIN2 Products</a> )
Background:	This gene encodes one of the proteins found in the SMN complex, which consists of several

## Target Details

---

gemin proteins and the protein known as the survival of motor neuron protein. The SMN complex is localized to a subnuclear compartment called gems (gemini of coiled bodies) and is required for assembly of spliceosomal snRNPs and for pre-mRNA splicing. This protein interacts directly with the survival of motor neuron protein and it is required for formation of the SMN complex. A knockout mouse targeting the mouse homolog of this gene exhibited disrupted snRNP assembly and motor neuron degeneration.,GEMIN2, SIP1, SIP1-delta, gem-associated protein 2,Signal Transduction,Neuroscience,Gemin 2

---

Molecular Weight: 31kDa

---

Gene ID: 8487

---

UniProt: [O14893](#)

---

Pathways: [Ribonucleoprotein Complex Subunit Organization](#), [Tube Formation](#)

## Application Details

---

---

Application Notes: WB,1:500 - 1:2000,IHC,1:50 - 1:200

---

Restrictions: For Research Use only

## Handling

---

---

Format: Liquid

---

Buffer: PBS with 0.02 % sodium azide,0.05 % BSA,50 % glycerol, pH 7.3.

---

Preservative: Sodium azide

---

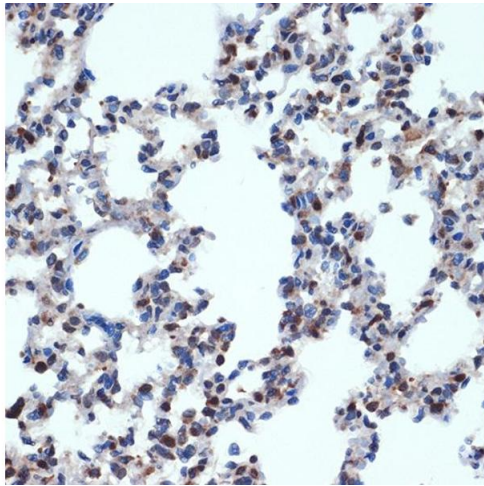
Precaution of Use: This product contains Sodium azide: a POISONOUS AND HAZARDOUS SUBSTANCE which should be handled by trained staff only.

---

Storage: -20 °C

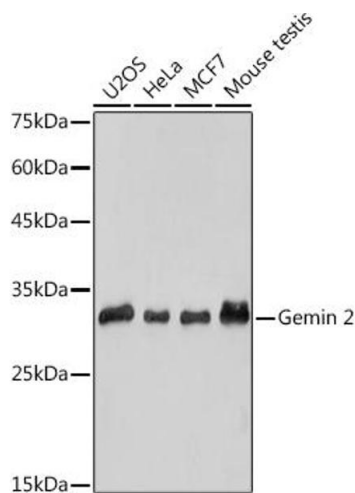
---

Storage Comment: Store at -20°C. Avoid freeze / thaw cycles.



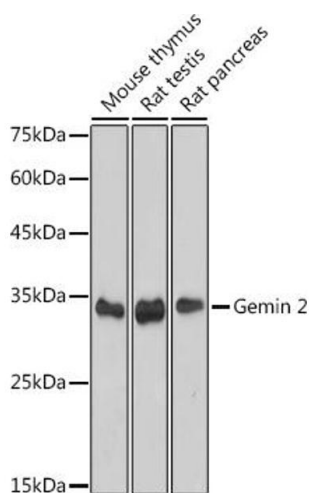
### Immunohistochemistry

**Image 1.** Immunohistochemistry of paraffin-embedded rat lung using Gemin 2 Rabbit mAb (ABIN7267366) at dilution of 1:100 (40x lens). Perform microwave antigen retrieval with 10 mM Tris/EDTA buffer pH 9.0 before commencing with IHC staining protocol.



### Western Blotting

**Image 2.** Western blot analysis of extracts of various cell lines, using Gemin 2 antibody (ABIN7267366) at 1:1000 dilution. Secondary antibody: HRP Goat Anti-Rabbit IgG (H+L) (ABIN1684268 and ABIN3020597) at 1:10000 dilution. Lysates/proteins: 25 µg per lane. Blocking buffer: 3 % nonfat dry milk in TBST. Detection: ECL Basic Kit (RM00020). Exposure time: 10s.



### Western Blotting

**Image 3.** Western blot analysis of extracts of various cell lines, using Gemin 2 antibody (ABIN7267366) at 1:1000 dilution. Secondary antibody: HRP Goat Anti-Rabbit IgG (H+L) (ABIN1684268 and ABIN3020597) at 1:10000 dilution. Lysates/proteins: 25 µg per lane. Blocking buffer: 3 % nonfat dry milk in TBST. Detection: ECL Basic Kit (RM00020). Exposure time: 60s.