

Datasheet for ABIN7267383
anti-GIT1 antibody (AA 460-640)



[Go to Product page](#)

5 Images

Overview

Quantity:	100 µL
Target:	GIT1
Binding Specificity:	AA 460-640
Reactivity:	Human
Host:	Rabbit
Clonality:	Polyclonal
Conjugate:	This GIT1 antibody is un-conjugated
Application:	Western Blotting (WB), Immunofluorescence (IF)

Product Details

Purpose:	[KO Validated] GIT1 Rabbit pAb
Immunogen:	Recombinant fusion protein containing a sequence corresponding to amino acids 460-640 of human GIT1 (NP_054749.2).
Sequence:	EIHKLQAENL QLRQPPGPVP TPPLPSERAE HTPMAPGGST HRRDRQAFSM YEPGSALKPF GGPPGDELTT RLQPFHSTEL EDDAIYSVHV PAGLYRIRKG VSASAVPFTP SSPLLSCSQE GSRHTSKLSR HGSGADSDYE NTQSGDPLL G LEGKRFLELG KEEDFHPELE SLDGDLDPGL P
Isotype:	IgG
Cross-Reactivity:	Human, Mouse, Rat
Characteristics:	Polyclonal Antibodies
Purification:	Affinity purification

Product Details

Grade: KO Validated

Target Details

Target: GIT1

Alternative Name: GIT1 ([GIT1 Products](#))

Background: GIT1,Signal Transduction,G protein signaling,G-Protein-Coupled Receptors(GPCR),Cell Biology & Developmental Biology,Cytoskeleton,Actins,GIT1

Molecular Weight: 19kDa/84kDa/85kDa

Gene ID: 28964

UniProt: [Q9Y2X7](#)

Application Details

Application Notes: WB,1:200 - 1:2000,IF,1:50 - 1:200

Restrictions: For Research Use only

Handling

Format: Liquid

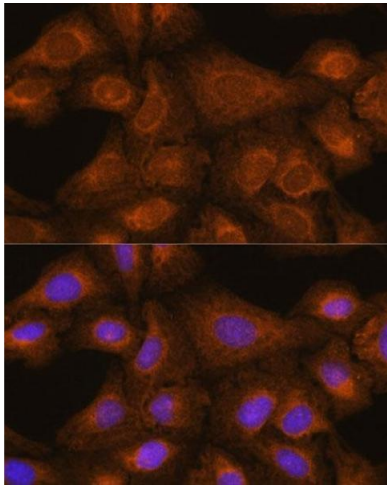
Buffer: PBS with 0.02 % sodium azide,50 % glycerol, pH 7.3.

Preservative: Sodium azide

Precaution of Use: This product contains Sodium azide: a POISONOUS AND HAZARDOUS SUBSTANCE which should be handled by trained staff only.

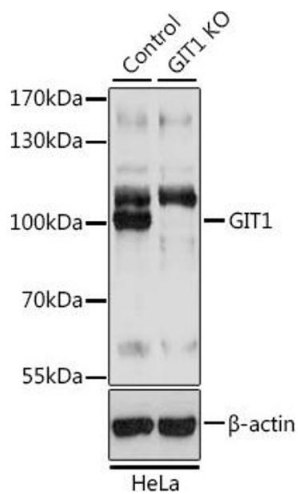
Storage: -20 °C

Storage Comment: Store at -20°C. Avoid freeze / thaw cycles.



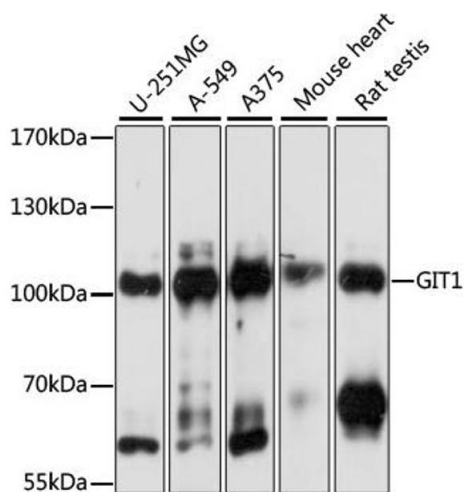
Immunofluorescence

Image 1. Immunofluorescence analysis of U-2 OS cells using [KO] GIT1 antibody (ABIN7267383) at dilution of 1:100. Blue: DAPI for nuclear staining.



Western Blotting

Image 2. Western blot analysis of extracts from normal (control) and GIT1 knockout (KO) HeLa cells, using GIT1 antibody (ABIN7267383) at 1:3000 dilution. Secondary antibody: HRP Goat Anti-Rabbit IgG (H+L) (ABIN1684268 and ABIN3020597) at 1:10000 dilution. Lysates/proteins: 25 µg per lane. Blocking buffer: 3% nonfat dry milk in TBST. Detection: ECL Basic Kit (RM00020). Exposure time: 1s.



Western Blotting

Image 3. Western blot analysis of extracts of various cell lines, using GIT1 antibody (ABIN7267383) at 1:1000 dilution. Secondary antibody: HRP Goat Anti-Rabbit IgG (H+L) (ABIN1684268 and ABIN3020597) at 1:10000 dilution. Lysates/proteins: 25 µg per lane. Blocking buffer: 3% nonfat dry milk in TBST. Detection: ECL Basic Kit (RM00020). Exposure time: 1s.

Please check the [product details page](#) for more images. Overall 5 images are available for ABIN7267383.