



[Go to Product page](#)

Datasheet for ABIN7267386

anti-GLI3 antibody (AA 800-900)

1 Image

Overview

Quantity:	100 µL
Target:	GLI3
Binding Specificity:	AA 800-900
Reactivity:	Human
Host:	Rabbit
Clonality:	Polyclonal
Conjugate:	This GLI3 antibody is un-conjugated
Application:	Western Blotting (WB), Immunohistochemistry (IHC)

Product Details

Purpose:	GLI3 Rabbit pAb
Immunogen:	A synthetic peptide corresponding to a sequence within amino acids 800-900 of human GLI3 (NP_000159.3).
Sequence:	KAPAVSPLIG NGTQSNNTCS LGGPMTLLPG RSDLSGVDVT MLNMLNRRDS SASTISSAYL SSRRSSGISP CFSSRRSSEA SQAEGRPQNV SVADSYDPIS T
Isotype:	IgG
Cross-Reactivity:	Human, Mouse, Rat
Characteristics:	Polyclonal Antibodies
Purification:	Affinity purification

Target Details

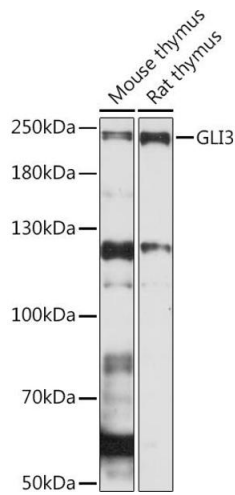
Target:	GLI3
Alternative Name:	GLI3 (GLI3 Products)
Background:	<p>This gene encodes a protein which belongs to the C2H2-type zinc finger proteins subclass of the Gli family. They are characterized as DNA-binding transcription factors and are mediators of Sonic hedgehog (Shh) signaling. The protein encoded by this gene localizes in the cytoplasm and activates patched Drosophila homolog (PTCH) gene expression. It is also thought to play a role during embryogenesis. Mutations in this gene have been associated with several diseases, including Greig cephalopolysyndactyly syndrome, Pallister-Hall syndrome, preaxial polydactyly type IV, and postaxial polydactyly types A1 and B.,GLI3,ACLS,GCPS,GLI3-190,GLI3FL,PAP-A,PAPA,PAPA1,PAPB,PHS,PPDIV,Epigenetics & Nuclear Signaling,Transcription Factors,Signal Transduction,Cell Biology & Developmental Biology,Hedgehog Signaling Pathway,Neuroscience,Stem Cells,GLI3</p>
Molecular Weight:	169kDa
Gene ID:	2737
UniProt:	P10071
Pathways:	Hedgehog Signaling

Application Details

Application Notes:	WB,1:500 - 1:2000,IHC,1:50 - 1:200
Restrictions:	For Research Use only

Handling

Format:	Liquid
Buffer:	PBS with 0.02 % sodium azide,50 % glycerol, pH 7.3.
Preservative:	Sodium azide
Precaution of Use:	This product contains Sodium azide: a POISONOUS AND HAZARDOUS SUBSTANCE which should be handled by trained staff only.
Storage:	-20 °C
Storage Comment:	Store at -20°C. Avoid freeze / thaw cycles.



Western Blotting

Image 1. Western blot analysis of extracts of various cell lines, using GLI3 Rabbit pAb (ABIN7267386) at 1:1000 dilution. Secondary antibody: HRP Goat Anti-Rabbit IgG (H+L) (ABIN1684268 and ABIN3020597) at 1:10000 dilution. Lysates/proteins: 25 µg per lane. Blocking buffer: 3 % nonfat dry milk in TBST. Detection: ECL Basic Kit (RM00020). Exposure time: 3 min.