

Datasheet for ABIN7267387
anti-GLIPR1 antibody (AA 22-140)[Go to Product page](#)

1 Image

Overview

| | |
|----------------------|---------------------------------------|
| Quantity: | 100 µL |
| Target: | GLIPR1 |
| Binding Specificity: | AA 22-140 |
| Reactivity: | Human |
| Host: | Rabbit |
| Clonality: | Polyclonal |
| Conjugate: | This GLIPR1 antibody is un-conjugated |
| Application: | Western Blotting (WB) |

Product Details

| | |
|-------------------|--|
| Purpose: | GLIPR1 Rabbit pAb |
| Immunogen: | Recombinant fusion protein containing a sequence corresponding to amino acids 22-140 of human GLIPR1 (NP_006842.2). |
| Sequence: | ANILPDIENE DFIKDCVRIH NKFRSEVKPT ASDMLYMTWD PALAQIAKAW ASNCQFSHNT RLKPPHKLHP NFTSLGENIW TGSVPIFSVS SAITNWDYDEI QDYDFKTRIC KKVCGHYTQ |
| Isotype: | IgG |
| Cross-Reactivity: | Rat |
| Characteristics: | Polyclonal Antibodies |
| Purification: | Affinity purification |

Target Details

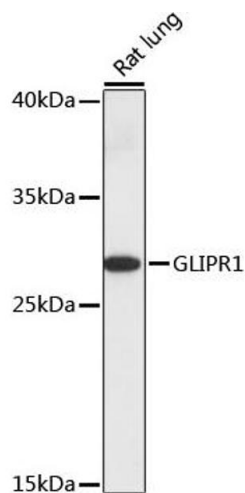
| | |
|-------------------|--|
| Target: | GLIPR1 |
| Alternative Name: | GLIPR1 (GLIPR1 Products) |
| Background: | This gene encodes a protein with similarity to both the pathogenesis-related protein (PR) superfamily and the cysteine-rich secretory protein (CRISP) family. Increased expression of this gene is associated with myelomocytic differentiation in macrophage and decreased expression of this gene through gene methylation is associated with prostate cancer. The protein has proapoptotic activities in prostate and bladder cancer cells. This gene is a member of a cluster on chromosome 12 containing two other similar genes. Alternatively spliced variants which encode different protein isoforms have been described, however, not all variants have been fully characterized.,GLIPR1,CRISP7,GLIPR,RTVP1,Cancer,Tumor suppressors,p53 pathway,Invasion and Metastasis,Cell Biology & Developmental Biology,Apoptosis,GLIPR1 |
| Molecular Weight: | 26kDa/30kDa |
| Gene ID: | 11010 |
| UniProt: | P48060 |
| Pathways: | Regulation of Lipid Metabolism by PPARalpha |

Application Details

| | |
|--------------------|-----------------------|
| Application Notes: | WB,1:500 - 1:2000 |
| Restrictions: | For Research Use only |

Handling

| | |
|--------------------|--|
| Format: | Liquid |
| Buffer: | PBS with 0.02 % sodium azide,50 % glycerol, pH 7.3. |
| Preservative: | Sodium azide |
| Precaution of Use: | This product contains Sodium azide: a POISONOUS AND HAZARDOUS SUBSTANCE which should be handled by trained staff only. |
| Storage: | -20 °C |
| Storage Comment: | Store at -20°C. Avoid freeze / thaw cycles. |



Western Blotting

Image 1. Western blot analysis of extracts of rat lung, using GLIPR1 antibody (ABIN7267387) at 1:1000 dilution. Secondary antibody: HRP Goat Anti-Rabbit IgG (H+L) (ABIN1684268 and ABIN3020597) at 1:10000 dilution. Lysates/proteins: 25 µg per lane. Blocking buffer: 3 % nonfat dry milk in TBST. Detection: ECL Basic Kit (RM00020). Exposure time: 10s.