

Datasheet for ABIN7267392

**anti-Glucagon antibody**

## 4 Images

[Go to Product page](#)

## Overview

Quantity:	100 µL
Target:	Glucagon (GCG)
Reactivity:	Human
Host:	Rabbit
Clonality:	Monoclonal
Conjugate:	This Glucagon antibody is un-conjugated
Application:	Immunohistochemistry (IHC), Immunofluorescence (IF)

## Product Details

Purpose:	GLP-1 Rabbit mAb
Immunogen:	A synthesized peptide derived from human GLP-1
Isotype:	IgG
Cross-Reactivity:	Mouse, Rat
Characteristics:	Monoclonal Antibodies
Purification:	Affinity purification

## Target Details

Target:	Glucagon (GCG)
Alternative Name:	GCG ( <a href="#">GCG Products</a> )
Background:	The protein encoded by this gene is actually a preproprotein that is cleaved into four distinct

## Target Details

mature peptides. One of these, glucagon, is a pancreatic hormone that counteracts the glucose-lowering action of insulin by stimulating glycogenolysis and gluconeogenesis. Glucagon is a ligand for a specific G-protein linked receptor whose signalling pathway controls cell proliferation. Two of the other peptides are secreted from gut endocrine cells and promote nutrient absorption through distinct mechanisms. Finally, the fourth peptide is similar to glicentin, an active enteroglucagon. [provided by RefSeq, Jul 2008],GLP-1, GLP1, GLP2, GRPP,Cancer,Cardiovascular,Cardiovascular diseases,Cardiovascular diseases\_Heart disease,Endocrine & Metabolism,Endocrine and metabolic diseases,Endocrine and metabolic diseases\_Diabetes,Heart,Neuroscience,Signal Transduction,Stem Cells,GCG

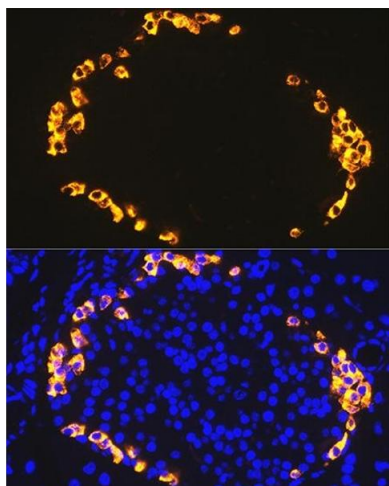
Molecular Weight:	11kDa
Gene ID:	2641
UniProt:	<a href="#">P01275</a>
Pathways:	<a href="#">Positive Regulation of Peptide Hormone Secretion</a> , <a href="#">Peptide Hormone Metabolism</a> , <a href="#">cAMP Metabolic Process</a> , <a href="#">Regulation of Carbohydrate Metabolic Process</a> , <a href="#">Feeding Behaviour</a> , <a href="#">Negative Regulation of intrinsic apoptotic Signaling</a>

## Application Details

Application Notes:	IHC,1:50 - 1:200,IF,1:50 - 1:200
Restrictions:	For Research Use only

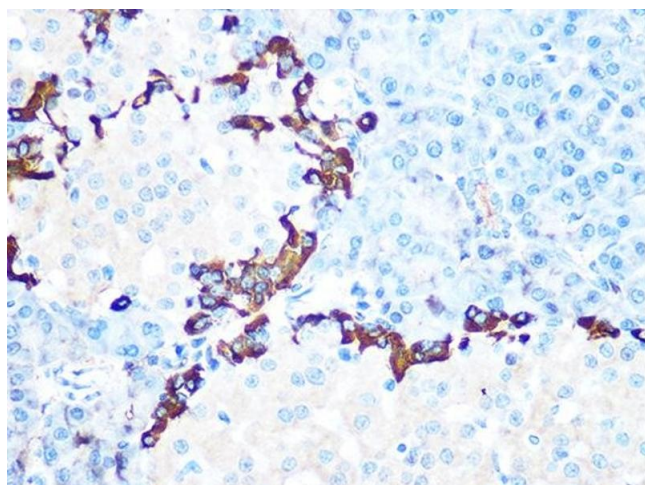
## Handling

Format:	Liquid
Buffer:	PBS with 0.02 % sodium azide,0.05 % BSA,50 % glycerol, pH 7.3.
Preservative:	Sodium azide
Precaution of Use:	This product contains Sodium azide: a POISONOUS AND HAZARDOUS SUBSTANCE which should be handled by trained staff only.
Storage:	-20 °C
Storage Comment:	Store at -20°C. Avoid freeze / thaw cycles.



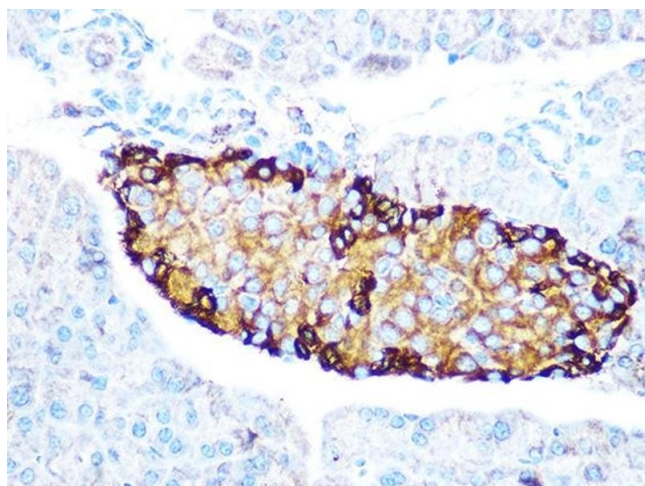
#### Immunofluorescence

**Image 1.** Immunofluorescence analysis of rat pancreas using GLP-1 antibody (ABIN7267392) at dilution of 1:100. Blue: DAPI for nuclear staining.



#### Immunohistochemistry

**Image 2.** Immunohistochemistry of paraffin-embedded rat pancreas using GLP-1 Rabbit mAb (ABIN7267392) at dilution of 1:100 (40x lens). Perform microwave antigen retrieval with 10 mM PBS buffer pH 7.2 before commencing with IHC staining protocol.



#### Immunohistochemistry

**Image 3.** Immunohistochemistry of paraffin-embedded mouse pancreas using GLP-1 Rabbit mAb (ABIN7267392) at dilution of 1:100 (40x lens). Perform microwave antigen retrieval with 10 mM PBS buffer pH 7.2 before commencing with IHC staining protocol.

Please check the [product details page](#) for more images. Overall 4 images are available for ABIN7267392.