



[Go to Product page](#)

Datasheet for ABIN7267395
anti-GLCCI1 antibody (AA 120-230)

1 Image

Overview

Quantity:	100 µL
Target:	GLCCI1
Binding Specificity:	AA 120-230
Reactivity:	Human
Host:	Rabbit
Clonality:	Polyclonal
Conjugate:	This GLCCI1 antibody is un-conjugated
Application:	Western Blotting (WB)

Product Details

Purpose:	GLCCI1 Rabbit pAb
Immunogen:	Recombinant fusion protein containing a sequence corresponding to amino acids 120-230 of human GLCCI1 (NP_612435.1).
Sequence:	QAPRAKGRPR RSPESHRRSS SPERRSPGSP VCRADKAKSQ QVRTSSTIRR TSSLDTITGP YLTGQWPRDP HVHYPSCMKD KATQTPSCWA EEGAEKRSHQ RSASWGSADQ L
Isotype:	IgG
Cross-Reactivity:	Human, Mouse
Characteristics:	Polyclonal Antibodies
Purification:	Affinity purification

Target Details

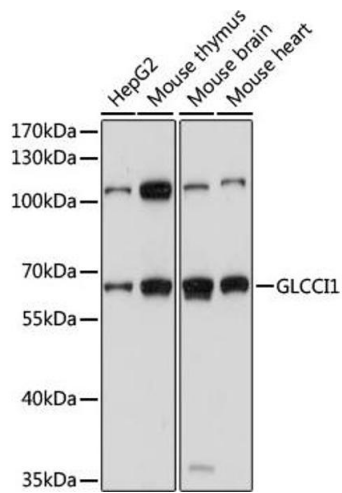
Target:	GLCCI1
Alternative Name:	GLCCI1 (GLCCI1 Products)
Background:	This gene encodes a protein of unknown function. Expression of this gene is induced by glucocorticoids and may be an early marker for glucocorticoid-induced apoptosis. Single nucleotide polymorphisms in this gene are associated with a decreased response to inhaled glucocorticoids in asthmatic patients.,GLCCI1,FAM117C,GCTR,GIG18,TSSN1,Cell Biology & Developmental Biology,GLCCI1
Molecular Weight:	58kDa
Gene ID:	113263
UniProt:	Q86VQ1

Application Details

Application Notes:	WB,1:500 - 1:2000
Restrictions:	For Research Use only

Handling

Format:	Liquid
Buffer:	PBS with 0.02 % sodium azide,50 % glycerol, pH 7.3.
Preservative:	Sodium azide
Precaution of Use:	This product contains Sodium azide: a POISONOUS AND HAZARDOUS SUBSTANCE which should be handled by trained staff only.
Storage:	-20 °C
Storage Comment:	Store at -20°C. Avoid freeze / thaw cycles.



Western Blotting

Image 1. Western blot analysis of extracts of various cell lines, using GLCCI1 antibody (ABIN7267395) at 1000 dilution. Secondary antibody: HRP Goat Anti-Rabbit IgG (H+L) (ABIN1684268 and ABIN3020597) at 1:10000 dilution. Lysates/proteins: 25 µg per lane. Blocking buffer: 3 % nonfat dry milk in TBST. Detection: ECL Basic Kit (RM00020). Exposure time: 5s.