

Datasheet for ABIN7267403
anti-GPI antibody



[Go to Product page](#)

2 Images

Overview

Quantity:	100 µL
Target:	GPI
Reactivity:	Human
Host:	Rabbit
Clonality:	Monoclonal
Conjugate:	This GPI antibody is un-conjugated
Application:	Western Blotting (WB)

Product Details

Purpose:	glucose-6-phosphate isomerase Rabbit mAb
Immunogen:	A synthesized peptide derived from human Glucose 6 phosphate isomerase
Isotype:	IgG
Cross-Reactivity:	Human, Rat
Characteristics:	Monoclonal Antibodies
Purification:	Affinity purification

Target Details

Target:	GPI
Alternative Name:	GPI (GPI Products)
Target Type:	Viral Protein

Target Details

Background:	<p>This gene encodes a member of the glucose phosphate isomerase protein family. The encoded protein has been identified as a moonlighting protein based on its ability to perform mechanistically distinct functions. In the cytoplasm, the gene product functions as a glycolytic enzyme (glucose-6-phosphate isomerase) that interconverts glucose-6-phosphate and fructose-6-phosphate. Extracellularly, the encoded protein (also referred to as neuroleukin) functions as a neurotrophic factor that promotes survival of skeletal motor neurons and sensory neurons, and as a lymphokine that induces immunoglobulin secretion. The encoded protein is also referred to as autocrine motility factor based on an additional function as a tumor-secreted cytokine and angiogenic factor. Defects in this gene are the cause of nonspherocytic hemolytic anemia and a severe enzyme deficiency can be associated with hydrops fetalis, immediate neonatal death and neurological impairment. Alternative splicing results in multiple transcript variants. [provided by RefSeq, Aug 2016],AMF, GNPI, NLK, PGI, PHI, SA-36, SA36,Cancer,Carbohydrate metabolism,Cell Biology & Developmental Biology,Cytokines,Endocrine & Metabolism,Growth factors,Immunology & Inflammation,Neuroscience,Signal Transduction,GPI</p>
-------------	--

Molecular Weight:	63kDa
-------------------	-------

Gene ID:	2821
----------	------

UniProt:	P06744
----------	------------------------

Application Details

Application Notes:	WB,1:500 - 1:2000
--------------------	-------------------

Restrictions:	For Research Use only
---------------	-----------------------

Handling

Format:	Liquid
---------	--------

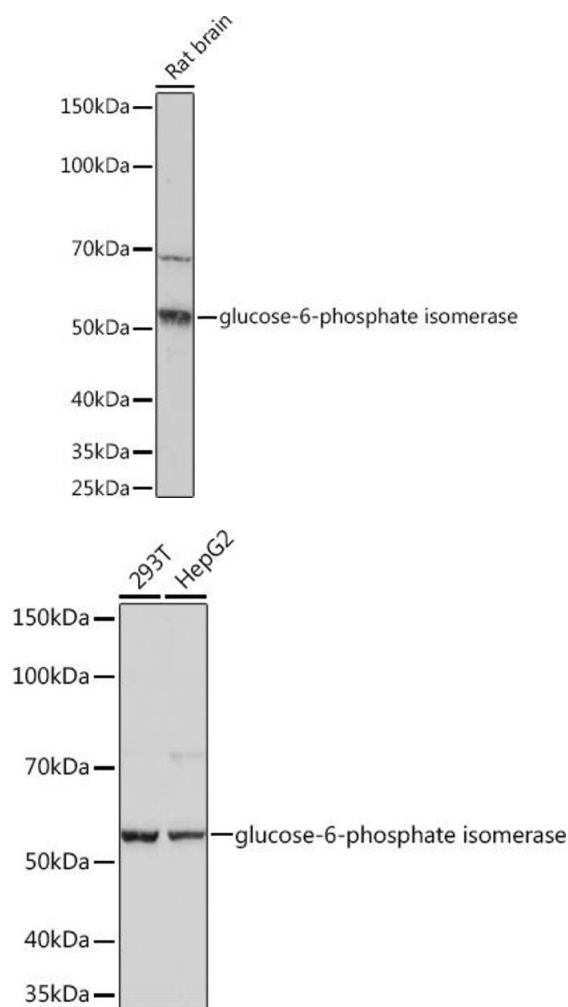
Buffer:	PBS with 0.02 % sodium azide,0.05 % BSA,50 % glycerol, pH 7.3.
---------	--

Preservative:	Sodium azide
---------------	--------------

Precaution of Use:	This product contains Sodium azide: a POISONOUS AND HAZARDOUS SUBSTANCE which should be handled by trained staff only.
--------------------	--

Storage:	-20 °C
----------	--------

Storage Comment:	Store at -20°C. Avoid freeze / thaw cycles.
------------------	---



Western Blotting

Image 1. Western blot analysis of extracts of Rat brain, using Glucose 6 phosphate isomerase Rabbit mAb at 1:1000 dilution. Secondary antibody: HRP Goat Anti-Rabbit IgG (H+L) (ABIN1684268 and ABIN3020597) at 1:10000 dilution. Lysates/proteins: 25 µg per lane. Blocking buffer: 3 % nonfat dry milk in TBST. Detection: ECL Basic Kit (RM00020). Exposure time: 60s.

Western Blotting

Image 2. Western blot analysis of extracts of various cell lines, using Glucose 6 phosphate isomerase Rabbit mAb at 1:1000 dilution. Secondary antibody: HRP Goat Anti-Rabbit IgG (H+L) (ABIN1684268 and ABIN3020597) at 1:10000 dilution. Lysates/proteins: 25 µg per lane. Blocking buffer: 3 % nonfat dry milk in TBST. Detection: ECL Basic Kit (RM00020). Exposure time: 10s.