



Datasheet for ABIN7267422
anti-GRINA antibody (AA 1-100)



[Go to Product page](#)

1 Image

Overview

Quantity:	100 µL
Target:	GRINA
Binding Specificity:	AA 1-100
Reactivity:	Human
Host:	Rabbit
Clonality:	Polyclonal
Conjugate:	This GRINA antibody is un-conjugated
Application:	Western Blotting (WB), Immunohistochemistry (IHC)

Product Details

Purpose:	GRINA Rabbit pAb
Immunogen:	A synthetic peptide corresponding to a sequence within amino acids 1-100 of human GRINA (NP_000828.1).
Sequence:	MSHEKSFLVS GDNYPNPNPG YPGGPQPPMP PYAQPPYPGA PYPQPPFQPS PYGQPGYPHG PSPYPQGGYP QGPYPQGGYP QGPYPQEGYP QGPYPQGGYP
Isotype:	IgG
Cross-Reactivity:	Human, Mouse, Rat
Characteristics:	Polyclonal Antibodies
Purification:	Affinity purification

Target Details

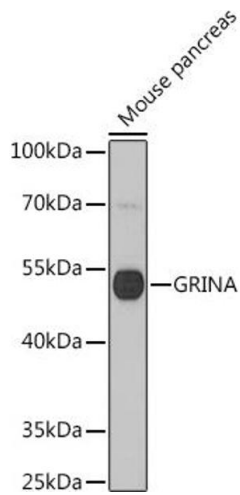
Target:	GRINA
Alternative Name:	GRINA (GRINA Products)
Background:	Potential apoptotic regulator.,GRINA,HNRGW,LFG1,NMDARA1,TMBIM3,Neuroscience,Neurodegenerative Diseases,Amyloid Plaque and Neurofibrillary Tangle Formation in Alzheimer's Disease,Dopamine Signaling in Parkinson's Disease,GRINA
Molecular Weight:	41kDa
Gene ID:	2907
UniProt:	Q7Z429

Application Details

Application Notes:	WB,1:500 - 1:2000,IHC,1:100 - 1:200
Restrictions:	For Research Use only

Handling

Format:	Liquid
Buffer:	PBS with 0.02 % sodium azide,50 % glycerol, pH 7.3.
Preservative:	Sodium azide
Precaution of Use:	This product contains Sodium azide: a POISONOUS AND HAZARDOUS SUBSTANCE which should be handled by trained staff only.
Storage:	-20 °C
Storage Comment:	Store at -20°C. Avoid freeze / thaw cycles.



Western Blotting

Image 1. Western blot analysis of extracts of Mouse pancreas, using GRINA antibody (ABIN7267422) at 1:1000 dilution. Secondary antibody: HRP Goat Anti-Rabbit IgG (H+L) (ABIN1684268 and ABIN3020597) at 1:10000 dilution. Lysates/proteins: 25 µg per lane. Blocking buffer: 3 % nonfat dry milk in TBST. Detection: ECL Basic Kit (RM00020). Exposure time: 1s.