



[Go to Product page](#)

Datasheet for ABIN7267425

## anti-GCLM antibody

### 1 Image

#### Overview

Quantity:	100 µL
Target:	GCLM
Reactivity:	Human
Host:	Rabbit
Clonality:	Monoclonal
Conjugate:	This GCLM antibody is un-conjugated
Application:	Western Blotting (WB)

#### Product Details

Purpose:	GCLM Rabbit mAb
Immunogen:	A synthesized peptide derived from human GCLM
Isotype:	IgG
Cross-Reactivity:	Human
Characteristics:	Monoclonal Antibodies
Purification:	Affinity purification

#### Target Details

Target:	GCLM
Alternative Name:	GCLM ( <a href="#">GCLM Products</a> )
Background:	Glutamate-cysteine ligase, also known as gamma-glutamylcysteine synthetase, is the first rate

## Target Details

---

limiting enzyme of glutathione synthesis. The enzyme consists of two subunits, a heavy catalytic subunit and a light regulatory subunit. Gamma glutamylcysteine synthetase deficiency has been implicated in some forms of hemolytic anemia. Alternative splicing results in multiple transcript variants encoding different isoforms. [provided by RefSeq, Apr 2015],GLCLR,Amino acid metabolism,Apoptosis,Cell Biology & Developmental Biology,Drug metabolism,Endocrine & Metabolism,Mitochondrial metabolism,Mitochondrial metabolism\_Mitochondrial markers,Neuroscience,Signal Transduction,GCLM

---

Molecular Weight: 31kDa

---

Gene ID: 2730

---

UniProt: [P48507](#)

## Application Details

---

---

Application Notes: WB,1:500 - 1:2000

---

Restrictions: For Research Use only

## Handling

---

---

Format: Liquid

---

Buffer: PBS with 0.02 % sodium azide,0.05 % BSA,50 % glycerol, pH 7.3.

---

Preservative: Sodium azide

---

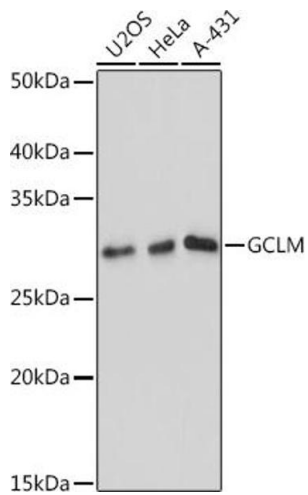
Precaution of Use: This product contains Sodium azide: a POISONOUS AND HAZARDOUS SUBSTANCE which should be handled by trained staff only.

---

Storage: -20 °C

---

Storage Comment: Store at -20°C. Avoid freeze / thaw cycles.



### Western Blotting

**Image 1.** Western blot analysis of extracts of various cell lines, using GCLM antibody (ABIN7267425) at 1:1000 dilution. Secondary antibody: HRP Goat Anti-Rabbit IgG (H+L) (ABIN1684268 and ABIN3020597) at 1:10000 dilution. Lysates/proteins: 25 µg per lane. Blocking buffer: 3 % nonfat dry milk in TBST. Detection: ECL Basic Kit (RM00020). Exposure time: 10s.