



[Go to Product page](#)

Datasheet for ABIN7267447  
**anti-GSTO1 antibody (AA 1-241)**

1 Image

Overview

Quantity:	100 µL
Target:	GSTO1
Binding Specificity:	AA 1-241
Reactivity:	Human
Host:	Rabbit
Clonality:	Polyclonal
Conjugate:	This GSTO1 antibody is un-conjugated
Application:	Western Blotting (WB)

Product Details

Purpose:	GSTO1 Rabbit pAb
Immunogen:	Recombinant fusion protein containing a sequence corresponding to amino acids 1-241 of human GSTO1 (NP_004823.1).
Sequence:	MSGESARSLG KGSAPPGPVP EGSIRIYSMR FCPFAERTRL VLKAKGIRHE VININLKNKP EWWFFKKNPFG LVPVLENSQG QLIYESAITC EYLDEAYPGK KLLPDDPYEK ACQKMILELF SKVPSLVGSF IRSQNKEDYA GLKEEFRKEF TKLEEVLTNK KTTFFGGNSI SMIDYLIWPW FERLEAMKLN ECVDHTPKLK LWMAAMKEDP TVSALLTSEK DWQGFLELYL QNSPEACDYG L
Isotype:	IgG
Cross-Reactivity:	Human, Mouse, Rat
Characteristics:	Polyclonal Antibodies

## Product Details

---

Purification: Affinity purification

## Target Details

---

Target: GSTO1

Alternative Name: GSTO1 ([GSTO1 Products](#))

Background: The protein encoded by this gene is an omega class glutathione S-transferase (GST) with glutathione-dependent thiol transferase and dehydroascorbate reductase activities. GSTs are involved in the metabolism of xenobiotics and carcinogens. The encoded protein acts as a homodimer and is found in the cytoplasm. Three transcript variants encoding different isoforms have been found for this gene.,GSTO1,GSTO 1-1,GSTTLp28,HEL-S-21,P28,SPG-R,GSTO1-1,GSTO1

Molecular Weight: 23kDa/24kDa/27kDa

Gene ID: 9446

UniProt: [P78417](#)

Pathways: [Myometrial Relaxation and Contraction, Negative Regulation of Transporter Activity](#)

## Application Details

---

Application Notes: WB,1:200 - 1:2000

Restrictions: For Research Use only

## Handling

---

Format: Liquid

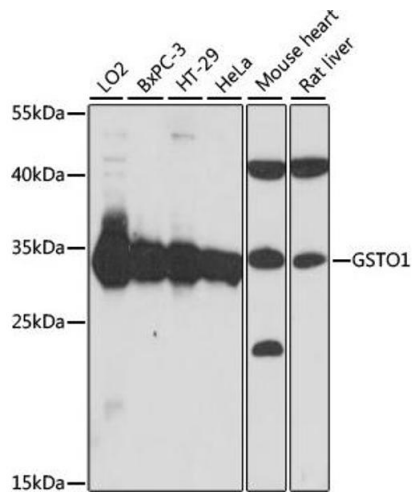
Buffer: PBS with 0.02 % sodium azide,50 % glycerol, pH 7.3.

Preservative: Sodium azide

Precaution of Use: This product contains Sodium azide: a POISONOUS AND HAZARDOUS SUBSTANCE which should be handled by trained staff only.

Storage: -20 °C

Storage Comment: Store at -20°C. Avoid freeze / thaw cycles.



### Western Blotting

**Image 1.** Western blot analysis of extracts of various cell lines, using GSTO1 antibody at 1:1000 dilution. Secondary antibody: HRP Goat Anti-Rabbit IgG (H+L) (ABIN1684268 and ABIN3020597) at 1:10000 dilution. Lysates/proteins: 25 µg per lane. Blocking buffer: 3% nonfat dry milk in TBST. Detection: ECL Basic Kit (RM00020). Exposure time: 90s.