

Datasheet for ABIN7267448

**anti-GSTP1 antibody**

## 4 Images

[Go to Product page](#)

## Overview

Quantity:	100 µL
Target:	GSTP1
Reactivity:	Human
Host:	Rabbit
Clonality:	Monoclonal
Conjugate:	This GSTP1 antibody is un-conjugated
Application:	Western Blotting (WB), Immunohistochemistry (IHC)

## Product Details

Purpose:	GST3/GSTP1 Rabbit mAb
Immunogen:	A synthesized peptide derived from human GST3/GSTP1
Isotype:	IgG
Cross-Reactivity:	Human, Mouse, Rat
Characteristics:	Monoclonal Antibodies
Purification:	Affinity purification

## Target Details

Target:	GSTP1
Alternative Name:	GSTP1 ( <a href="#">GSTP1 Products</a> )
Background:	Glutathione S-transferases (GSTs) are a family of enzymes that play an important role in

## Target Details

detoxification by catalyzing the conjugation of many hydrophobic and electrophilic compounds with reduced glutathione. Based on their biochemical, immunologic, and structural properties, the soluble GSTs are categorized into 4 main classes: alpha, mu, pi, and theta. This GST family member is a polymorphic gene encoding active, functionally different GSTP1 variant proteins that are thought to function in xenobiotic metabolism and play a role in susceptibility to cancer, and other diseases. [provided by RefSeq, Jul 2008],DFN7,FAEES3,GST3,GSTP,HEL-S-22,PI,GST3 / GSTP1,GSTP1,Apoptosis,Blood,Cancer,Cardiovascular,Cell Biology & Developmental Biology,Endocrine & Metabolism,Mitochondrial metabolism,Mitochondrial metabolism\_Mitochondrial markers,Neuroscience,GSTP1

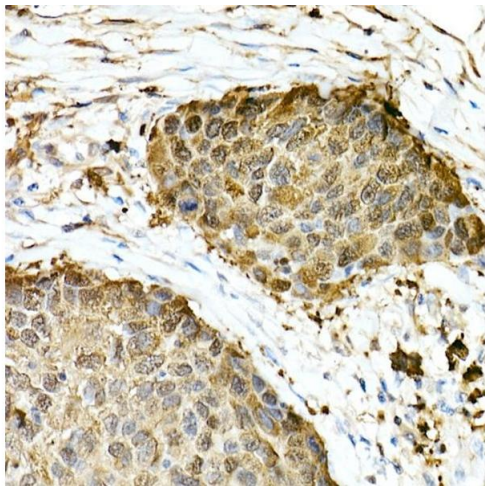
Molecular Weight:	23kDa
Gene ID:	2950
UniProt:	<a href="#">P09211</a>
Pathways:	<a href="#">Cellular Response to Molecule of Bacterial Origin</a>

## Application Details

Application Notes:	WB,1:500 - 1:2000,IHC,1:50 - 1:200
Restrictions:	For Research Use only

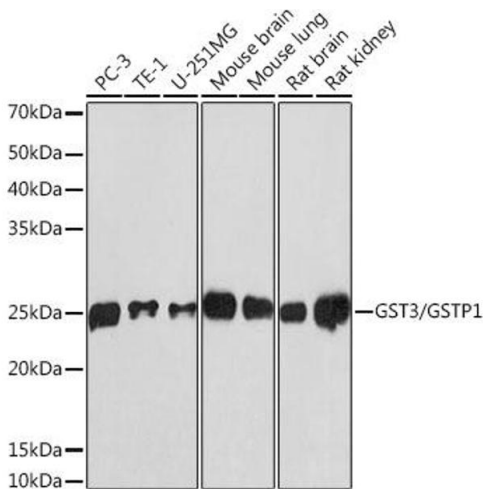
## Handling

Format:	Liquid
Buffer:	PBS with 0.02 % sodium azide,0.05 % BSA,50 % glycerol, pH 7.3.
Preservative:	Sodium azide
Precaution of Use:	This product contains Sodium azide: a POISONOUS AND HAZARDOUS SUBSTANCE which should be handled by trained staff only.
Storage:	-20 °C
Storage Comment:	Store at -20°C. Avoid freeze / thaw cycles.



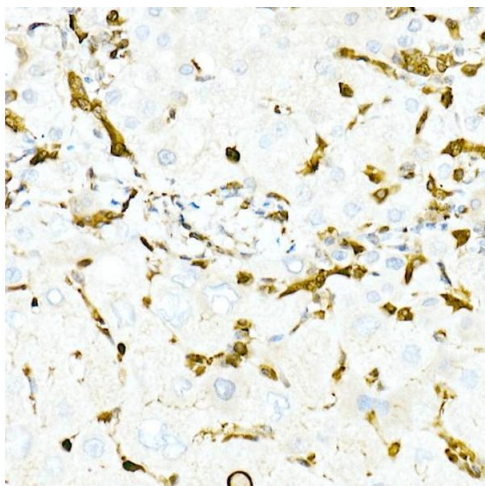
#### Immunohistochemistry

**Image 1.** Immunohistochemistry of paraffin-embedded Human esophageal cancer using GST3/GSTP1 antibody (ABIN7267448) at dilution of 1:100 (40x lens). Perform high pressure antigen retrieval with 10 mM Tris/EDTA buffer pH 9.0 before commencing with IHC staining protocol.



#### Western Blotting

**Image 2.** Western blot analysis of extracts of various cell lines, using GST3/GSTP1 antibody (ABIN7267448) at 1:1000 dilution. Secondary antibody: HRP Goat Anti-Rabbit IgG (H+L) (ABIN1684268 and ABIN3020597) at 1:10000 dilution. Lysates/proteins: 25 µg per lane. Blocking buffer: 3 % nonfat dry milk in TBST. Detection: ECL Basic Kit (RM00020). Exposure time: 3 min.



#### Immunohistochemistry

**Image 3.** Immunohistochemistry of paraffin-embedded Human liver using GST3/GSTP1 antibody (ABIN7267448) at dilution of 1:100 (40x lens). Perform high pressure antigen retrieval with 10 mM Tris/EDTA buffer pH 9.0 before commencing with IHC staining protocol.

Please check the [product details page](#) for more images. Overall 4 images are available for ABIN7267448.