



[Go to Product page](#)

Datasheet for ABIN7267452

anti-Glutathione Synthetase antibody

2 Images

Overview

Quantity:	100 µL
Target:	Glutathione Synthetase (GSS)
Reactivity:	Human
Host:	Rabbit
Clonality:	Monoclonal
Conjugate:	This Glutathione Synthetase antibody is un-conjugated
Application:	Western Blotting (WB), Immunofluorescence (IF)

Product Details

Purpose:	Glutathione Synthetase (GSS) Rabbit mAb
Immunogen:	A synthesized peptide derived from human Glutathione Synthetase (GSS) (GSS)
Isotype:	IgG
Cross-Reactivity:	Human, Mouse, Rat
Characteristics:	Monoclonal Antibodies
Purification:	Affinity purification

Target Details

Target:	Glutathione Synthetase (GSS)
Alternative Name:	GSS (GSS Products)
Background:	Glutathione is important for a variety of biological functions, including protection of cells from

Target Details

oxidative damage by free radicals, detoxification of xenobiotics, and membrane transport. The protein encoded by this gene functions as a homodimer to catalyze the second step of glutathione biosynthesis, which is the ATP-dependent conversion of gamma-L-glutamyl-L-cysteine to glutathione. Defects in this gene are a cause of glutathione synthetase deficiency. [provided by RefSeq, Jul 2008],GSHS, HEL-S-64p, HEL-S-88n,Amino acid metabolism,Cell Biology & Developmental Biology,Drug metabolism,Endocrine & Metabolism,Neuroscience,Signal Transduction,GSS

Molecular Weight: 52kDa

Gene ID: 2937

UniProt: [P48637](#)

Pathways: [Warburg Effect](#)

Application Details

Application Notes: WB,1:500 - 1:2000,IF,1:50 - 1:200

Restrictions: For Research Use only

Handling

Format: Liquid

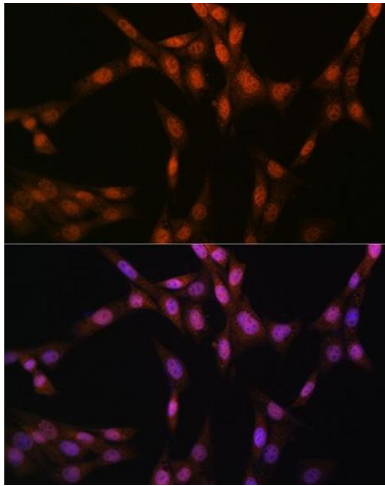
Buffer: PBS with 0.02 % sodium azide,0.05 % BSA,50 % glycerol, pH 7.3.

Preservative: Sodium azide

Precaution of Use: This product contains Sodium azide: a POISONOUS AND HAZARDOUS SUBSTANCE which should be handled by trained staff only.

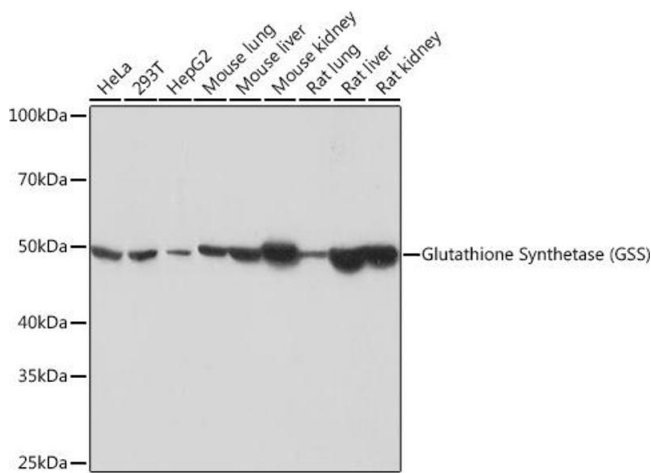
Storage: -20 °C

Storage Comment: Store at -20°C. Avoid freeze / thaw cycles.



Immunofluorescence

Image 1. Immunofluorescence analysis of NIH-3T3 cells using Glutathione Synthetase (GSS) (GSS) Rabbit mAb (ABIN7267452) at dilution of 1:100 (40x lens). Blue: DAPI for nuclear staining.



Western Blotting

Image 2. Western blot analysis of extracts of various cell lines, using Glutathione Synthetase (GSS) (GSS) Rabbit mAb (ABIN7267452) at 1:1000 dilution. Secondary antibody: HRP Goat Anti-Rabbit IgG (H+L) (ABIN1684268 and ABIN3020597) at 1:10000 dilution. Lysates/proteins: 25 µg per lane. Blocking buffer: 3% nonfat dry milk in TBST. Detection: ECL Basic Kit (RM00020). Exposure time: 3 min.