

Datasheet for ABIN7267457
anti-Glycerol Kinase antibody[Go to Product page](#)

4 Images

Overview

Quantity:	100 µL
Target:	Glycerol Kinase (GK)
Reactivity:	Human
Host:	Rabbit
Clonality:	Monoclonal
Conjugate:	This Glycerol Kinase antibody is un-conjugated
Application:	Western Blotting (WB), Immunohistochemistry (IHC)

Product Details

Purpose:	Glycerol kinase (GK) Rabbit mAb
Immunogen:	Recombinant protein of human Glycerol kinase (GK) (GK).
Isotype:	IgG
Cross-Reactivity:	Human, Mouse, Rat
Characteristics:	Monoclonal Antibodies
Purification:	Affinity purification

Target Details

Target:	Glycerol Kinase (GK)
Alternative Name:	Glycerol kinase (GK Products)
Background:	The protein encoded by this gene belongs to the FGGY kinase family. This protein is a key

Target Details

enzyme in the regulation of glycerol uptake and metabolism. It catalyzes the phosphorylation of glycerol by ATP, yielding ADP and glycerol-3-phosphate. Mutations in this gene are associated with glycerol kinase deficiency (GKD). Alternatively spliced transcript variants encoding different isoforms have been found for this gene.,GK, GK1, GKD, glycerol kinase,Cancer,Signal Transduction,Endocrine & Metabolism,Lipid Metabolism,Glycerol kinase

Molecular Weight: 50kDa

Gene ID: 2710

UniProt: [P32189](#)

Application Details

Application Notes: WB,1:500 - 1:2000,IHC,1:50 - 1:200

Restrictions: For Research Use only

Handling

Format: Liquid

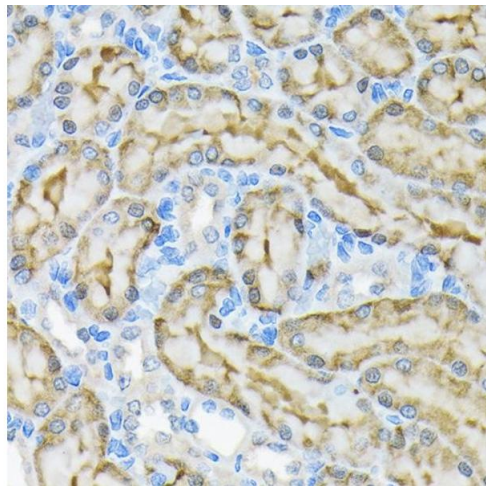
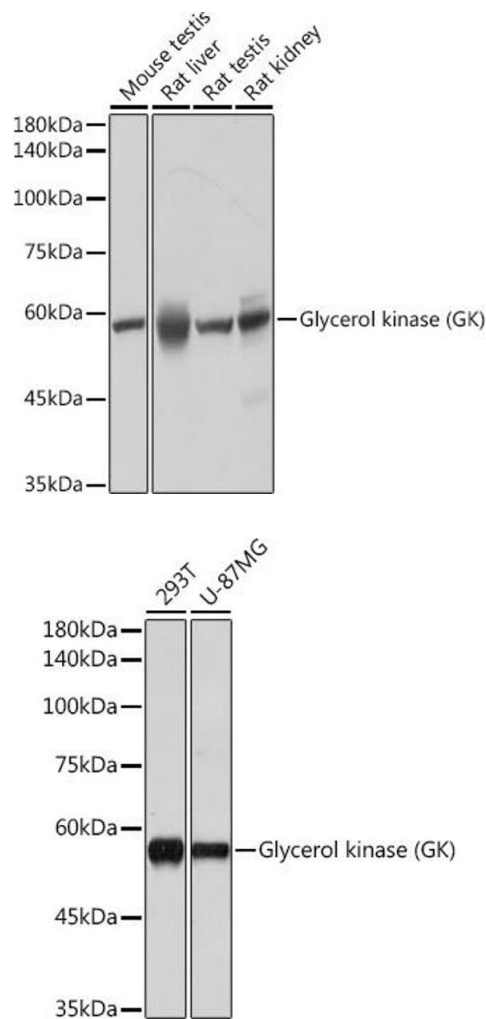
Buffer: PBS with 0.02 % sodium azide,0.05 % BSA,50 % glycerol, pH 7.3.

Preservative: Sodium azide

Precaution of Use: This product contains Sodium azide: a POISONOUS AND HAZARDOUS SUBSTANCE which should be handled by trained staff only.

Storage: -20 °C

Storage Comment: Store at -20°C. Avoid freeze / thaw cycles.



Western Blotting

Image 1. Western blot analysis of extracts of various cell lines, using Glycerol kinase (GK) (GK) antibody (ABIN7267457) at 1:1000 dilution. Secondary antibody: HRP Goat Anti-Rabbit IgG (H+L) (ABIN1684268 and ABIN3020597) at 1:10000 dilution. Lysates/proteins: 25 µg per lane. Blocking buffer: 3 % nonfat dry milk in TBST. Detection: ECL Basic Kit (RM00020). Exposure time: 10s.

Western Blotting

Image 2. Western blot analysis of extracts of various cell lines, using Glycerol kinase (GK) (GK) antibody (ABIN7267457) at 1:1000 dilution. Secondary antibody: HRP Goat Anti-Rabbit IgG (H+L) (ABIN1684268 and ABIN3020597) at 1:10000 dilution. Lysates/proteins: 25 µg per lane. Blocking buffer: 3 % nonfat dry milk in TBST. Detection: ECL Basic Kit (RM00020). Exposure time: 60s.

Immunohistochemistry

Image 3. Immunohistochemistry of paraffin-embedded rat kidney using Glycerol kinase (GK) Rabbit mAb (ABIN7267457) at dilution of 1:100 (40x lens). Perform microwave antigen retrieval with 10 mM Tris/EDTA buffer pH 9.0 before commencing with IHC staining protocol.

Please check the [product details page](#) for more images. Overall 4 images are available for ABIN7267457.