



[Go to Product page](#)

Datasheet for ABIN7267462
anti-GLRa2 antibody (AA 350-420)

1 Image

Overview

Quantity:	100 µL
Target:	GLRa2
Binding Specificity:	AA 350-420
Reactivity:	Human
Host:	Rabbit
Clonality:	Polyclonal
Conjugate:	This GLRa2 antibody is un-conjugated
Application:	Western Blotting (WB), Immunofluorescence (IF)

Product Details

Purpose:	GLRA2 Rabbit pAb
Immunogen:	Recombinant fusion protein containing a sequence corresponding to amino acids 350-420 of human GLRA2 (NP_002054.1).
Sequence:	RLRRRQKRQN KEEDVTRESR FNFSGYGMGH CLQVKDGTAV KATPANPLPQ PPKDGDAIKK KFVDRAKRID T
Isotype:	IgG
Cross-Reactivity:	Human, Mouse, Rat
Characteristics:	Polyclonal Antibodies
Purification:	Affinity purification

Target Details

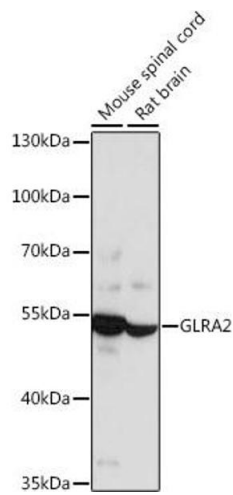
Target:	GLRa2
Alternative Name:	GLRA2 (GLRa2 Products)
Background:	The glycine receptor consists of two subunits, alpha and beta, and acts as a pentamer. The protein encoded by this gene is an alpha subunit and can bind strychnine. Several transcript variants encoding different isoforms have been found for this gene.,GLRA2,GLR,Neuroscience,GLRA2
Molecular Weight:	42kDa/51kDa/52kDa
Gene ID:	2742
UniProt:	P23416
Pathways:	Synaptic Membrane

Application Details

Application Notes:	WB,1:500 - 1:2000,IF,1:50 - 1:100
Restrictions:	For Research Use only

Handling

Format:	Liquid
Buffer:	PBS with 0.02 % sodium azide,50 % glycerol, pH 7.3.
Preservative:	Sodium azide
Precaution of Use:	This product contains Sodium azide: a POISONOUS AND HAZARDOUS SUBSTANCE which should be handled by trained staff only.
Storage:	-20 °C
Storage Comment:	Store at -20°C. Avoid freeze / thaw cycles.



Western Blotting

Image 1. Western blot analysis of extracts of various cell lines, using GLR antibody (ABIN7267462) at 1:1000 dilution. Secondary antibody: HRP Goat Anti-Rabbit IgG (H+L) (ABIN1684268 and ABIN3020597) at 1:10000 dilution. Lysates/proteins: 25 µg per lane. Blocking buffer: 3 % nonfat dry milk in TBST. Detection: ECL Enhanced Kit (RM00021). Exposure time: 1s.