

Datasheet for ABIN7267475  
**anti-CD235b/GYPB antibody (AA 1-91)**[Go to Product page](#)

## 1 Image

## Overview

Quantity:	100 µL
Target:	CD235b/GYPB (GYPB)
Binding Specificity:	AA 1-91
Reactivity:	Human
Host:	Rabbit
Clonality:	Polyclonal
Conjugate:	This CD235b/GYPB antibody is un-conjugated
Application:	Western Blotting (WB)

## Product Details

Purpose:	GYPB Rabbit pAb
Immunogen:	A synthetic peptide corresponding to a sequence within amino acids 1-91 of human GYPB (NP_002091.3).
Sequence:	MYGKIIFVLL LSEIVSISAL STTEVAMHTS TSSSVTKSYI SSQTNGETGQ LVHRFTVPAP VVILIILCV MAGIIGTILL ISYTIRRLIK A
Isotype:	IgG
Cross-Reactivity:	Human, Mouse
Characteristics:	Polyclonal Antibodies
Purification:	Affinity purification

## Target Details

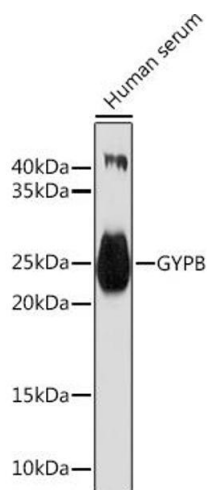
Target:	CD235b/GYPB (GYPB)
Alternative Name:	GYPB ( <a href="#">GYPB Products</a> )
Background:	<p>Glycophorins A (GYPA) and B (GYPB) are major sialoglycoproteins of the human erythrocyte membrane which bear the antigenic determinants for the MN and Ss blood groups. GYPB gene consists of 5 exons and has 97 % sequence homology with GYPA from the 5' UTR to the coding sequence encoding the first 45 amino acids. In addition to the M or N and S or s antigens, that commonly occur in all populations, about 40 related variant phenotypes have been identified. These variants include all the variants of the Miltenberger complex and several isoforms of Sta, also, Dantu, Sat, He, Mg, and deletion variants Ena, S-s-U- and Mk. Most of the variants are the result of gene recombinations between GYPA and GYPB. Alternate splicing results in multiple transcript variants.,GYPB,CD235b,GPB,GYP,MNS,PAS-3,SS,Immunology &amp; Inflammation,CD markers,Cardiovascular,Blood,Blood Cell Antigens,GYPB</p>
Molecular Weight:	6kDa/9kDa
Gene ID:	2994
UniProt:	<a href="#">P06028</a>

## Application Details

Application Notes:	WB,1:500 - 1:2000
Restrictions:	For Research Use only

## Handling

Format:	Liquid
Buffer:	PBS with 0.02 % sodium azide,50 % glycerol, pH 7.3.
Preservative:	Sodium azide
Precaution of Use:	This product contains Sodium azide: a POISONOUS AND HAZARDOUS SUBSTANCE which should be handled by trained staff only.
Storage:	-20 °C
Storage Comment:	Store at -20°C. Avoid freeze / thaw cycles.



### Western Blotting

**Image 1.** Western blot analysis of extracts of Human serum, using GYPB Rabbit pAb (ABIN7267475) at 1:1000 dilution. Secondary antibody: HRP Goat Anti-Rabbit IgG (H+L) (ABIN1684268 and ABIN3020597) at 1:10000 dilution. Lysates/proteins: 25 µg per lane. Blocking buffer: 3 % nonfat dry milk in TBST. Detection: ECL Basic Kit (RM00020). Exposure time: 60s.