



[Go to Product page](#)

Datasheet for ABIN7267485

anti-GLO1 antibody

1 Image

Overview

Quantity:	100 µL
Target:	GLO1
Reactivity:	Human
Host:	Rabbit
Clonality:	Monoclonal
Conjugate:	This GLO1 antibody is un-conjugated
Application:	Western Blotting (WB)

Product Details

Purpose:	GLO1 Rabbit mAb
Immunogen:	A synthesized peptide derived from human GLO1
Isotype:	IgG
Cross-Reactivity:	Human, Mouse, Rat
Characteristics:	Monoclonal Antibodies
Purification:	Affinity purification

Target Details

Target:	GLO1
Alternative Name:	GLO1 (GLO1 Products)
Background:	The enzyme encoded by this gene is responsible for the catalysis and formation of S-lactoyl-

Target Details

glutathione from methylglyoxal condensation and reduced glutathione. Glyoxalase I is linked to HLA and is localized to 6p21.3-p21.1, between HLA and the centromere. [provided by RefSeq, Jul 2008],GLOD1, GLYI, HEL-S-74,Apoptosis,Cancer,Cardiovascular,Cell Biology & Developmental Biology,Endocrine & Metabolism,Heart,Heart_Cardiac metabolism,Signal Transduction,Tumor biomarkers,GLO1

Molecular Weight: 21kDa

Gene ID: 2739

UniProt: [Q04760](#)

Application Details

Application Notes: WB,1:500 - 1:2000

Restrictions: For Research Use only

Handling

Format: Liquid

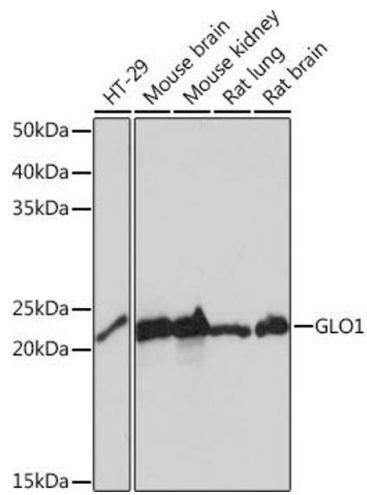
Buffer: PBS with 0.02 % sodium azide,0.05 % BSA,50 % glycerol, pH 7.3.

Preservative: Sodium azide

Precaution of Use: This product contains Sodium azide: a POISONOUS AND HAZARDOUS SUBSTANCE which should be handled by trained staff only.

Storage: -20 °C

Storage Comment: Store at -20°C. Avoid freeze / thaw cycles.



Western Blotting

Image 1. Western blot analysis of extracts of various cell lines, using GLO1 Rabbit mAb (ABIN7267485) at 1:1000 dilution. Secondary antibody: HRP Goat Anti-Rabbit IgG (H+L) (ABIN1684268 and ABIN3020597) at 1:10000 dilution. Lysates/proteins: 25 µg per lane. Blocking buffer: 3 % nonfat dry milk in TBST. Detection: ECL Basic Kit (RM00020). Exposure time: 5s.