

Datasheet for ABIN7267494
anti-Golgin A2 (GOLGA2) antibody

5 Images

[Go to Product page](#)

Overview

Quantity:	100 µL
Target:	Golgin A2 (GOLGA2)
Reactivity:	Human
Host:	Rabbit
Clonality:	Monoclonal
Conjugate:	Un-conjugated
Application:	Western Blotting (WB), Immunohistochemistry (IHC), Immunofluorescence (IF)

Product Details

Purpose:	GM130 Rabbit mAb
Immunogen:	A synthesized peptide derived from human GM130
Isotype:	IgG
Cross-Reactivity:	Human, Mouse, Rat
Characteristics:	Monoclonal Antibodies
Purification:	Affinity purification

Target Details

Target:	Golgin A2 (GOLGA2)
Alternative Name:	GOLGA2 (GOLGA2 Products)
Background:	The Golgi apparatus, which participates in glycosylation and transport of proteins and lipids in

Target Details

the secretory pathway, consists of a series of stacked cisternae (flattened membrane sacs). Interactions between the Golgi and microtubules are thought to be important for the reorganization of the Golgi after it fragments during mitosis. This gene encodes one of the golgins, a family of proteins localized to the Golgi. This encoded protein has been postulated to play roles in the stacking of Golgi cisternae and in vesicular transport. Several alternatively spliced transcript variants of this gene have been described, but the full-length nature of these variants has not been determined. [provided by RefSeq, Feb 2010],GM130,Signal Transduction,GOLGA2

Molecular Weight: 130kDa

Gene ID: 2801

UniProt: [Q08379](#)

Pathways: [SARS-CoV-2 Protein Interactome](#)

Application Details

Application Notes: WB,1:500 - 1:2000,IHC,1:50 - 1:200,IF,1:50 - 1:200

Restrictions: For Research Use only

Handling

Format: Liquid

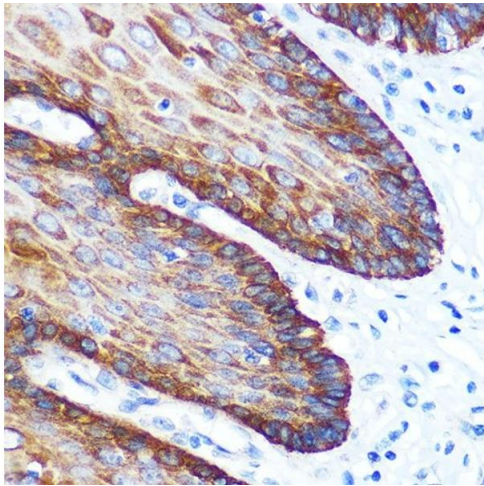
Buffer: PBS with 0.02 % sodium azide,0.05 % BSA,50 % glycerol, pH 7.3.

Preservative: Sodium azide

Precaution of Use: This product contains Sodium azide: a POISONOUS AND HAZARDOUS SUBSTANCE which should be handled by trained staff only.

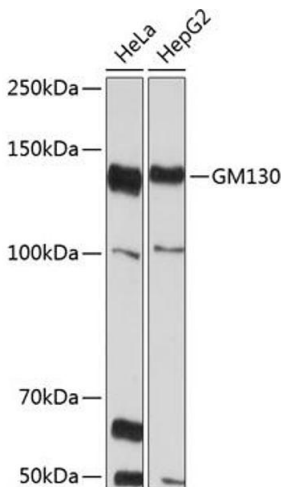
Storage: -20 °C

Storage Comment: Store at -20°C. Avoid freeze / thaw cycles.



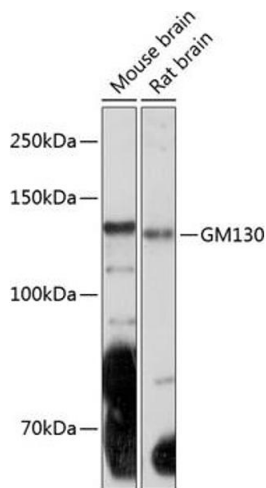
Immunohistochemistry

Image 1. Immunohistochemistry of paraffin-embedded human esophageal using GM130 Rabbit mAb (ABIN7267494) at dilution of 1:100 (40x lens). Perform microwave antigen retrieval with 10 mM PBS buffer pH 7.2 before commencing with IHC staining protocol.



Western Blotting

Image 2. Western blot analysis of extracts of various cell lines, using GM130 Rabbit mAb (ABIN7267494) at 1:1000 dilution. Secondary antibody: HRP Goat Anti-Rabbit IgG (H+L) (ABIN1684268 and ABIN3020597) at 1:10000 dilution. Lysates/proteins: 25 µg per lane. Blocking buffer: 3 % nonfat dry milk in TBST. Detection: ECL Basic Kit (RM00020). Exposure time: 10s.



Western Blotting

Image 3. Western blot analysis of extracts of various cell lines, using GM130 Rabbit mAb (ABIN7267494) at 1:1000 dilution. Secondary antibody: HRP Goat Anti-Rabbit IgG (H+L) (ABIN1684268 and ABIN3020597) at 1:10000 dilution. Lysates/proteins: 25 µg per lane. Blocking buffer: 3 % nonfat dry milk in TBST. Detection: ECL Basic Kit (RM00020). Exposure time: 3 min.

Please check the [product details page](#) for more images. Overall 5 images are available for ABIN7267494.