

Datasheet for ABIN7267501
anti-GSC antibody



[Go to Product page](#)

1 Image

Overview

Quantity:	100 µL
Target:	GSC
Reactivity:	Human
Host:	Rabbit
Clonality:	Monoclonal
Conjugate:	This GSC antibody is un-conjugated
Application:	Western Blotting (WB)

Product Details

Purpose:	GSC Rabbit mAb
Immunogen:	A synthesized peptide derived from human GSC
Isotype:	IgG
Cross-Reactivity:	Human, Mouse
Characteristics:	Monoclonal Antibodies
Purification:	Affinity purification

Target Details

Target:	GSC
Alternative Name:	GSC (GSC Products)
Background:	This gene encodes a member of the bicoid subfamily of the paired (PRD) homeobox family of

Target Details

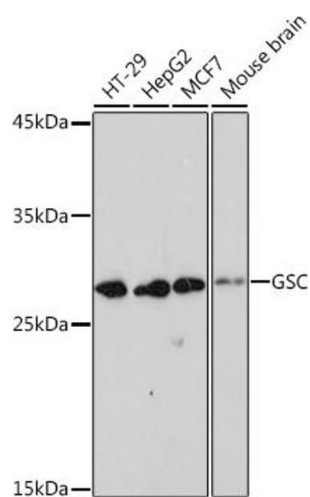
	proteins. The encoded protein acts as a transcription factor and may be autoregulatory. A similar protein in mice plays a role in craniofacial and rib cage development during embryogenesis. [provided by RefSeq, Jul 2008],SAMS,Epigenetics & Nuclear Signaling,Stem Cells,Transcription Factors,GSC
Molecular Weight:	28kDa
Gene ID:	145258
UniProt:	P56915

Application Details

Application Notes:	WB,1:500 - 1:2000
Restrictions:	For Research Use only

Handling

Format:	Liquid
Buffer:	PBS with 0.02 % sodium azide,0.05 % BSA,50 % glycerol, pH 7.3.
Preservative:	Sodium azide
Precaution of Use:	This product contains Sodium azide: a POISONOUS AND HAZARDOUS SUBSTANCE which should be handled by trained staff only.
Storage:	-20 °C
Storage Comment:	Store at -20°C. Avoid freeze / thaw cycles.



Western Blotting

Image 1. Western blot analysis of extracts of various cell lines, using GSC Rabbit mAb (ABIN7267501) at 1:1000 dilution. Secondary antibody: HRP Goat Anti-Rabbit IgG (H+L) (ABIN1684268 and ABIN3020597) at 1:10000 dilution. Lysates/proteins: 25 µg per lane. Blocking buffer: 3 % nonfat dry milk in TBST. Detection: ECL Basic Kit (RM00020). Exposure time: 180s.