



[Go to Product page](#)

Datasheet for ABIN7267505
anti-Granulin antibody

4 Images

Overview

Quantity:	100 µL
Target:	Granulin (GRN)
Reactivity:	Human
Host:	Rabbit
Clonality:	Monoclonal
Conjugate:	This Granulin antibody is un-conjugated
Application:	Western Blotting (WB)

Product Details

Purpose:	Granulin Rabbit mAb
Immunogen:	A synthesized peptide derived from human Granulin
Isotype:	IgG
Cross-Reactivity:	Human
Characteristics:	Monoclonal Antibodies
Purification:	Affinity purification

Target Details

Target:	Granulin (GRN)
Alternative Name:	GRN (GRN Products)
Background:	Granulins are a family of secreted, glycosylated peptides that are cleaved from a single

Target Details

precursor protein with 7.5 repeats of a highly conserved 12-cysteine granulin/epithelin motif. The 88 kDa precursor protein, progranulin, is also called proepithelin and PC cell-derived growth factor. Cleavage of the signal peptide produces mature granulin which can be further cleaved into a variety of active, 6 kDa peptides. These smaller cleavage products are named granulin A, granulin B, granulin C, etc. Epithelins 1 and 2 are synonymous with granulins A and B, respectively. Both the peptides and intact granulin protein regulate cell growth. However, different members of the granulin protein family may act as inhibitors, stimulators, or have dual actions on cell growth. Granulin family members are important in normal development, wound healing, and tumorigenesis. [provided by RefSeq, Jul 2008],CLN11, GEP, GP88, PCDGF, PEPI, PGRN,Cancer,Cell Biology & Developmental Biology,Cytokines,Epigenetics & Nuclear Signaling,Growth factors,Immunology & Inflammation,Neurodegenerative Diseases,Neuroscience,RNA Binding,Signal Transduction,GRN

Molecular Weight: 55,75kDa

Gene ID: 2896

UniProt: [P28799](#)

Application Details

Application Notes: WB,1:500 - 1:2000

Restrictions: For Research Use only

Handling

Format: Liquid

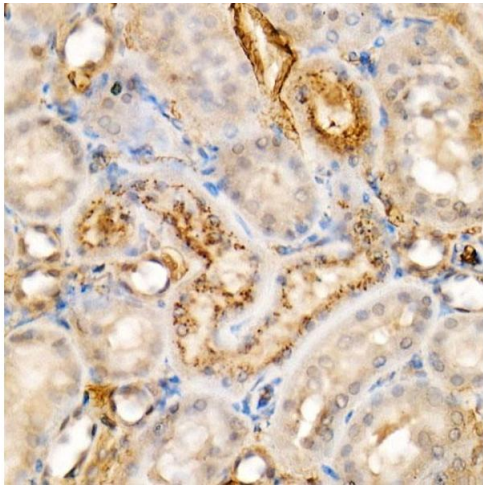
Buffer: PBS with 0.02 % sodium azide,0.05 % BSA,50 % glycerol, pH 7.3.

Preservative: Sodium azide

Precaution of Use: This product contains Sodium azide: a POISONOUS AND HAZARDOUS SUBSTANCE which should be handled by trained staff only.

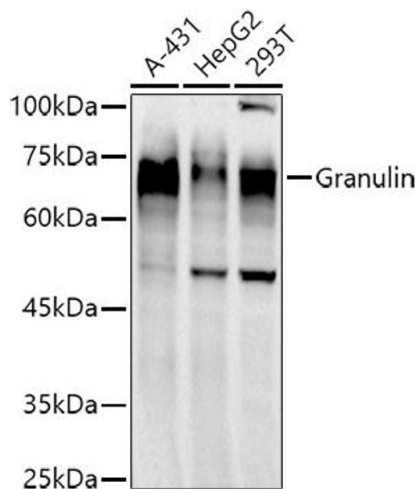
Storage: -20 °C

Storage Comment: Store at -20°C. Avoid freeze / thaw cycles.



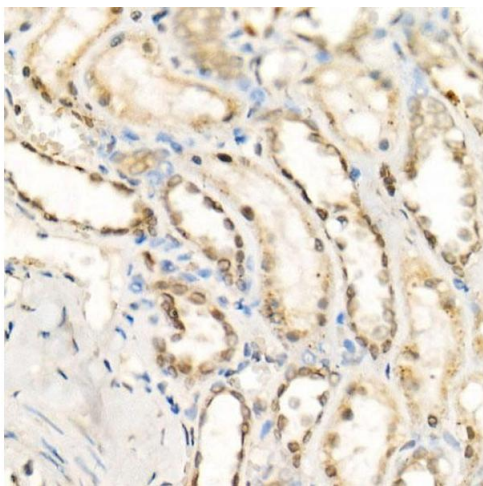
Immunohistochemistry

Image 1. Immunohistochemistry of paraffin-embedded rat kidney using [KO Validated] Granulin Rabbit mAb at dilution of 1:500 (40x lens).



Western Blotting

Image 2. Western blot analysis of extracts of various cell lines, using Granulin antibody at 1:1000 dilution. Secondary antibody: HRP Goat Anti-Rabbit IgG (H+L) (ABIN1684268 and ABIN3020597) at 1:10000 dilution. Lysates/proteins: 25 µg per lane. Blocking buffer: 3% nonfat dry milk in TBST. Detection: ECL Basic Kit (RM00020). Exposure time: 90s.



Immunohistochemistry

Image 3. Immunohistochemistry of paraffin-embedded human kidney using [KO Validated] Granulin Rabbit mAb at dilution of 1:500 (40x lens).

Please check the [product details page](#) for more images. Overall 4 images are available for ABIN7267505.