

Datasheet for ABIN7267510
anti-GRAP antibody (AA 128-217)[Go to Product page](#)

1 Image

Overview

Quantity:	100 µL
Target:	GRAP
Binding Specificity:	AA 128-217
Reactivity:	Human
Host:	Rabbit
Clonality:	Polyclonal
Conjugate:	This GRAP antibody is un-conjugated
Application:	Western Blotting (WB)

Product Details

Purpose:	GRAP Rabbit pAb
Immunogen:	Recombinant fusion protein containing a sequence corresponding to amino acids 128-217 of human GRAP (NP_006604.1).
Sequence:	LNELVDFYRT TTIAKKRQIF LRDEEPLLKS PGACFAQAQF DFSAQDPSQL SFRRGDIIEV LERPDPHWWR GRSCGRVGFF PRSYVQPVHL
Isotype:	IgG
Cross-Reactivity:	Human
Characteristics:	Polyclonal Antibodies
Purification:	Affinity purification

Target Details

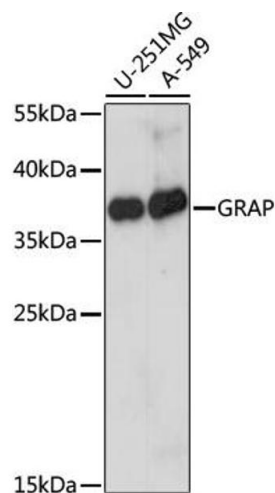
Target:	GRAP
Alternative Name:	GRAP (GRAP Products)
Background:	This gene encodes a member of the GRB2/Sem5/Drk family and functions as a cytoplasmic signaling protein which contains an SH2 domain flanked by two SH3 domains. The SH2 domain interacts with ligand-activated receptors for stem cell factor and erythropoietin, and facilitates the formation of a stable complex with the BCR-ABL oncoprotein. This protein also associates with the Ras guanine nucleotide exchange factor SOS1 (son of sevenless homolog 1) through its N-terminal SH3 domain. In general, it couples signals from receptor and cytoplasmic tyrosine kinases to the Ras signaling pathway.,GRAP,Signal Transduction,G protein signaling,Signal Transduction,GRAP
Molecular Weight:	25kDa
Gene ID:	10750
UniProt:	Q13588

Application Details

Application Notes:	WB,1:200 - 1:2000
Restrictions:	For Research Use only

Handling

Format:	Liquid
Buffer:	PBS with 0.02 % sodium azide,50 % glycerol, pH 7.3.
Preservative:	Sodium azide
Precaution of Use:	This product contains Sodium azide: a POISONOUS AND HAZARDOUS SUBSTANCE which should be handled by trained staff only.
Storage:	-20 °C
Storage Comment:	Store at -20°C. Avoid freeze / thaw cycles.



Western Blotting

Image 1. Western blot analysis of extracts of various cell lines, using GRAP antibody (ABIN7267510) at 1:1000 dilution. Secondary antibody: HRP Goat Anti-Rabbit IgG (H+L) (ABIN1684268 and ABIN3020597) at 1:10000 dilution. Lysates/proteins: 25 µg per lane. Blocking buffer: 3 % nonfat dry milk in TBST. Detection: ECL Basic Kit (RM00020). Exposure time: 5s.