



[Go to Product page](#)

Datasheet for ABIN7267515

anti-GAP43 antibody

2 Images

Overview

| | |
|--------------|--|
| Quantity: | 100 µL |
| Target: | GAP43 |
| Reactivity: | Human |
| Host: | Rabbit |
| Clonality: | Monoclonal |
| Conjugate: | This GAP43 antibody is un-conjugated |
| Application: | Western Blotting (WB), Immunofluorescence (IF) |

Product Details

| | |
|-------------------|--|
| Purpose: | GAP43 Rabbit mAb |
| Immunogen: | A synthesized peptide derived from human GAP43 |
| Isotype: | IgG |
| Cross-Reactivity: | Human, Mouse, Rat |
| Characteristics: | Monoclonal Antibodies |
| Purification: | Affinity purification |

Target Details

| | |
|-------------------|---|
| Target: | GAP43 |
| Alternative Name: | GAP43 (GAP43 Products) |
| Background: | The protein encoded by this gene has been termed a 'growth' or 'plasticity' protein because it is |

Target Details

expressed at high levels in neuronal growth cones during development and axonal regeneration. This protein is considered a crucial component of an effective regenerative response in the nervous system. Alternatively spliced transcript variants encoding distinct isoforms have been found for this gene. [provided by RefSeq, Jul 2008],B-50;PP46;GAP43,Cell Type Marker,Cell Type Marker_Growth Cone,Cell Type Marker_Neuron marker,Cell Type Marker_Synapse marker,Neuroscience,Protein phosphorylation,GAP43

Molecular Weight: 48kDa

Gene ID: 2596

UniProt: [P17677](#)

Application Details

Application Notes: WB,1:500 - 1:2000,IF,1:50 - 1:200

Restrictions: For Research Use only

Handling

Format: Liquid

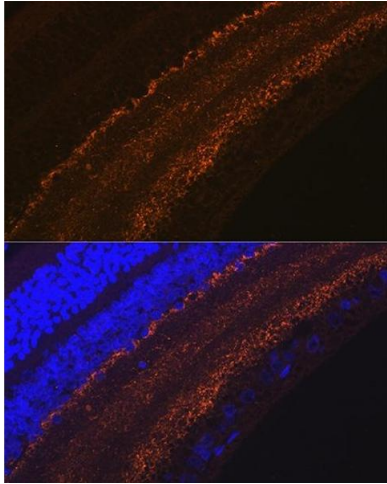
Buffer: PBS with 0.02 % sodium azide,0.05 % BSA,50 % glycerol, pH 7.3.

Preservative: Sodium azide

Precaution of Use: This product contains Sodium azide: a POISONOUS AND HAZARDOUS SUBSTANCE which should be handled by trained staff only.

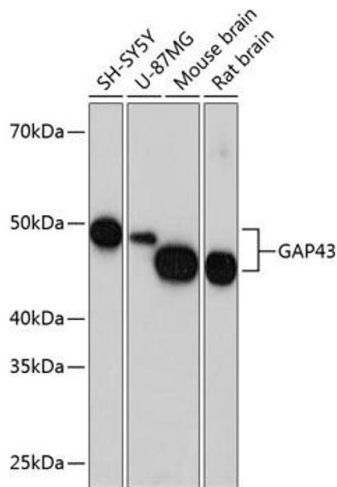
Storage: -20 °C

Storage Comment: Store at -20°C. Avoid freeze / thaw cycles.



Immunofluorescence

Image 1. Immunofluorescence analysis of rat retina using G Rabbit mAb (ABIN7267515) at dilution of 1:100 (40x lens). Blue: DAPI for nuclear staining.



Western Blotting

Image 2. Western blot analysis of extracts of various cell lines, using G antibody (ABIN7267515) at 1:1000 dilution. Secondary antibody: HRP Goat Anti-Rabbit IgG (H+L) (ABIN1684268 and ABIN3020597) at 1:10000 dilution. Lysates/proteins: 25 µg per lane. Blocking buffer: 3 % nonfat dry milk in TBST. Detection: ECL Basic Kit (RM00020). Exposure time: 10s.