



[Go to Product page](#)

Datasheet for ABIN7267524
anti-GTPBP6 antibody

1 Image

Overview

Quantity:	100 µL
Target:	GTPBP6
Reactivity:	Human
Host:	Rabbit
Clonality:	Polyclonal
Conjugate:	This GTPBP6 antibody is un-conjugated
Application:	Western Blotting (WB), Immunofluorescence (IF)

Product Details

Purpose:	GTPBP6 Rabbit pAb
Immunogen:	Recombinant protein of human GTPBP6.
Isotype:	IgG
Cross-Reactivity:	Human, Mouse, Rat
Characteristics:	Polyclonal Antibodies
Purification:	Affinity purification

Target Details

Target:	GTPBP6
Alternative Name:	GTPBP6 (GTPBP6 Products)
Background:	This gene encodes a GTP binding protein and is located in the pseudoautosomal region (PAR)

Target Details

at the end of the short arms of the X and Y chromosomes. [provided by RefSeq, Nov 2011],PGPL,GTPBP6,Signal Transduction,GTPBP6

Gene ID: 8225

UniProt: [O43824](#)

Application Details

Application Notes: WB,1:500 - 1:2000,IF,1:50 - 1:200

Restrictions: For Research Use only

Handling

Format: Liquid

Buffer: PBS with 0.02 % sodium azide,50 % glycerol, pH 7.3.

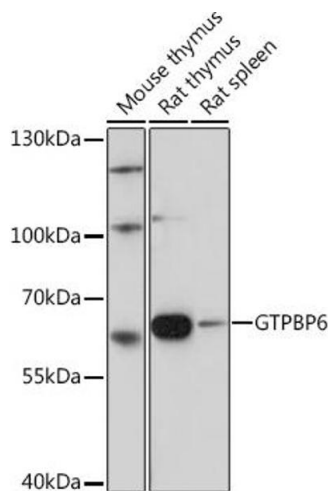
Preservative: Sodium azide

Precaution of Use: This product contains Sodium azide: a POISONOUS AND HAZARDOUS SUBSTANCE which should be handled by trained staff only.

Storage: -20 °C

Storage Comment: Store at -20°C. Avoid freeze / thaw cycles.

Images



Western Blotting

Image 1. Western blot analysis of extracts of various cell lines, using GTPBP6 Rabbit pAb (ABIN7267524) at 1:1000 dilution. Secondary antibody: HRP Goat Anti-Rabbit IgG (H+L) (ABIN1684268 and ABIN3020597) at 1:10000 dilution. Lysates/proteins: 25 µg per lane. Blocking buffer: 3 % nonfat dry milk in TBST. Detection: ECL Basic Kit (RM00020). Exposure time: 30s.