

Datasheet for ABIN7267527
anti-GTPBP8 antibody (AA 1-170)



[Go to Product page](#)

4 Images

Overview

Quantity:	100 µL
Target:	GTPBP8
Binding Specificity:	AA 1-170
Reactivity:	Human
Host:	Rabbit
Clonality:	Polyclonal
Conjugate:	This GTPBP8 antibody is un-conjugated
Application:	Western Blotting (WB), Immunohistochemistry (IHC), Immunofluorescence (IF)

Product Details

Purpose:	GTPBP8 Rabbit pAb
Immunogen:	Recombinant fusion protein containing a sequence corresponding to amino acids 1-170 of human GTPBP8 (NP_054889.2).
Sequence:	MAAPGLRLGA GRLFEMPAVL ERLSRYNSTS QAFAEVLRLP KQQLRKLLYP LQEVERFLAP YGRQDLHLRI FDPSPEDIAR ADNIFTATER NRIDYVSSAV RIDHAPDLPR PEVCFIGRSN VGKSSLIKAL FSLAPEVEVR VSKKPGHTKK MNFFKVGKHF TVVDMPGYGF
Isotype:	IgG
Cross-Reactivity:	Human, Mouse, Rat
Characteristics:	Polyclonal Antibodies
Purification:	Affinity purification

Target Details

Target:	GTPBP8
Alternative Name:	GTPBP8 (GTPBP8 Products)
Background:	GTPBP8,HSPC135,Signal Transduction,GTPBP8
Molecular Weight:	13kDa/28kDa/32kDa
Gene ID:	29083
UniProt:	Q8N3Z3

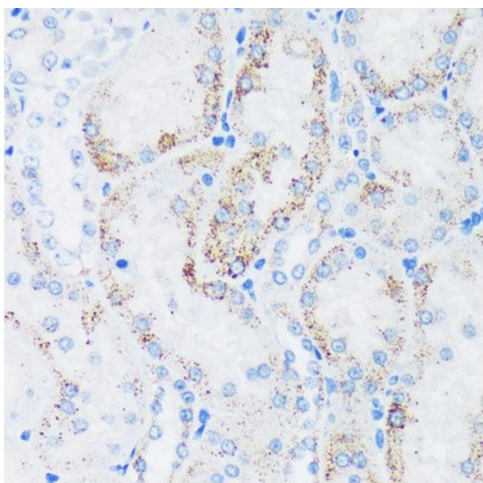
Application Details

Application Notes:	WB,1:500 - 1:2000,IHC,1:50 - 1:200,IF,1:50 - 1:200
Restrictions:	For Research Use only

Handling

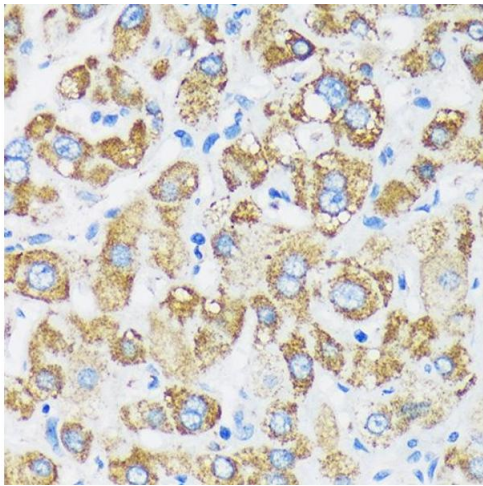
Format:	Liquid
Buffer:	PBS with 0.02 % sodium azide,50 % glycerol, pH 7.3.
Preservative:	Sodium azide
Precaution of Use:	This product contains Sodium azide: a POISONOUS AND HAZARDOUS SUBSTANCE which should be handled by trained staff only.
Storage:	-20 °C
Storage Comment:	Store at -20°C. Avoid freeze / thaw cycles.

Images



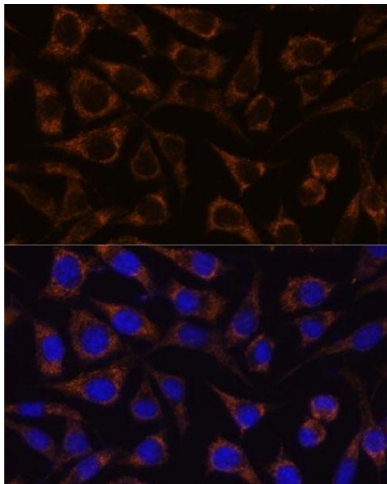
Immunohistochemistry

Image 1. Immunohistochemistry of paraffin-embedded Rat kidney using GTPBP8 Rabbit pAb (ABIN7267527) at dilution of 1:100 (40x lens). Perform microwave antigen retrieval with 10 mM PBS buffer pH 7.2 before commencing with IHC staining protocol.



Immunohistochemistry

Image 2. Immunohistochemistry of paraffin-embedded Human liver using GTPBP8 Rabbit pAb (ABIN7267527) at dilution of 1:100 (40x lens). Perform microwave antigen retrieval with 10 mM PBS buffer pH 7.2 before commencing with IHC staining protocol.



Immunofluorescence

Image 3. Immunofluorescence analysis of L929 cells using GTPBP8 antibody (ABIN7267527) at dilution of 1:100. Blue: DAPI for nuclear staining.

Please check the [product details page](#) for more images. Overall 4 images are available for ABIN7267527.