

Datasheet for ABIN7267549

anti-GBP1 antibody**2** Images[Go to Product page](#)

Overview

Quantity:	100 µL
Target:	GBP1
Reactivity:	Human
Host:	Rabbit
Clonality:	Monoclonal
Conjugate:	This GBP1 antibody is un-conjugated
Application:	Western Blotting (WB), Immunohistochemistry (IHC)

Product Details

Purpose:	GBP1 Rabbit mAb
Immunogen:	A synthesized peptide derived from human GBP1.
Isotype:	IgG
Cross-Reactivity:	Human, Rat
Characteristics:	Monoclonal Antibodies
Purification:	Affinity purification

Target Details

Target:	GBP1
Alternative Name:	GBP1 (GBP1 Products)
Background:	Guanylate binding protein expression is induced by interferon. Guanylate binding proteins are

Target Details

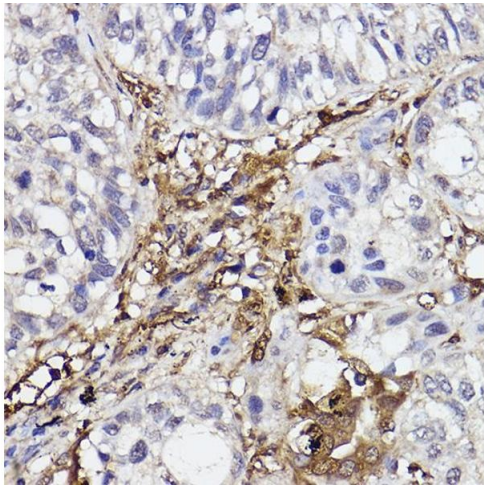
	characterized by their ability to specifically bind guanine nucleotides (GMP, GDP, and GTP) and are distinguished from the GTP-binding proteins by the presence of 2 binding motifs rather than 3.,GBP1, guanylate-binding protein 1,Signal Transduction,Immunology & Inflammation,Cytokines,Interferons,Cell Intrinsic Innate Immunity Signaling Pathway,GBP1
Molecular Weight:	68kDa
Gene ID:	2633
UniProt:	P32455
Pathways:	Cellular Response to Molecule of Bacterial Origin

Application Details

Application Notes:	WB,1:500 - 1:2000,IHC,1:50 - 1:200
Restrictions:	For Research Use only

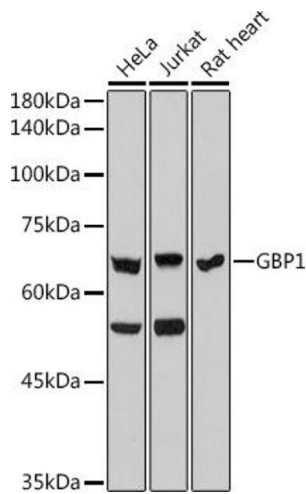
Handling

Format:	Liquid
Buffer:	PBS with 0.02 % sodium azide,0.05 % BSA,50 % glycerol, pH 7.3.
Preservative:	Sodium azide
Precaution of Use:	This product contains Sodium azide: a POISONOUS AND HAZARDOUS SUBSTANCE which should be handled by trained staff only.
Storage:	-20 °C
Storage Comment:	Store at -20°C. Avoid freeze / thaw cycles.



Immunohistochemistry

Image 1. Immunohistochemistry of paraffin-embedded human lung cancer using GBP1 Rabbit mAb (ABIN7267549) at dilution of 1:100 (40x lens). Perform high pressure antigen retrieval with 10 mM citrate buffer pH 6.0 before commencing with IHC staining protocol.



Western Blotting

Image 2. Western blot analysis of extracts of various cell lines, using GBP1 antibody (ABIN7267549) at 1:1000 dilution. Secondary antibody: HRP Goat Anti-Rabbit IgG (H+L) (ABIN1684268 and ABIN3020597) at 1:10000 dilution. Lysates/proteins: 25 µg per lane. Blocking buffer: 3 % nonfat dry milk in TBST. Detection: ECL Basic Kit (RM00020). Exposure time: 180s.