



[Go to Product page](#)

Datasheet for ABIN7267557

## anti-H2AFY antibody

### 6 Images

#### Overview

Quantity:	100 µL
Target:	H2AFY
Reactivity:	Human
Host:	Rabbit
Clonality:	Monoclonal
Conjugate:	This H2AFY antibody is un-conjugated
Application:	Western Blotting (WB), Immunohistochemistry (IHC), Immunofluorescence (IF)

#### Product Details

Purpose:	macroH2A.1 Rabbit mAb
Immunogen:	A synthesized peptide derived from human macroH2A.1
Isotype:	IgG
Cross-Reactivity:	Human, Mouse, Rat
Characteristics:	Monoclonal Antibodies
Purification:	Affinity purification

#### Target Details

Target:	H2AFY
Alternative Name:	H2AFY ( <a href="#">H2AFY Products</a> )
Background:	Histones are basic nuclear proteins that are responsible for the nucleosome structure of the

## Target Details

---

chromosomal fiber in eukaryotes. Nucleosomes consist of approximately 146 bp of DNA wrapped around a histone octamer composed of pairs of each of the four core histones (H2A, H2B, H3, and H4). The chromatin fiber is further compacted through the interaction of a linker histone, H1, with the DNA between the nucleosomes to form higher order chromatin structures. This gene encodes a replication-independent histone that is a member of the histone H2A family. It replaces conventional H2A histones in a subset of nucleosomes where it represses transcription and participates in stable X chromosome inactivation. Alternative splicing results in multiple transcript variants encoding different isoforms. [provided by RefSeq, Oct 2015],H2A.y, H2A/y, H2AF12M, MACROH2A1.1, mH2A1, macroH2A1.2,Epigenetics & Nuclear Signaling,Histones,H2AFY

---

Molecular Weight: 40kDa

---

Gene ID: 9555

---

UniProt: [075367](#)

## Application Details

---

---

Application Notes: WB,1:500 - 1:2000,IHC,1:50 - 1:200,IF,1:50 - 1:200

---

Restrictions: For Research Use only

## Handling

---

---

Format: Liquid

---

Buffer: PBS with 0.02 % sodium azide,0.05 % BSA,50 % glycerol, pH 7.3.

---

Preservative: Sodium azide

---

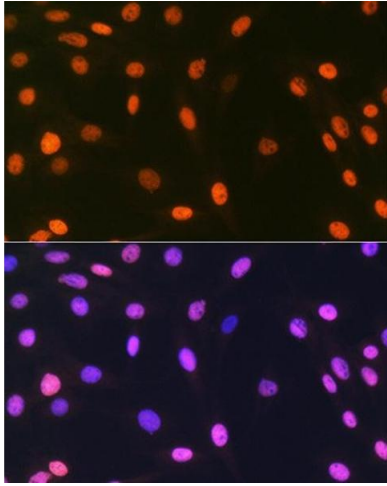
Precaution of Use: This product contains Sodium azide: a POISONOUS AND HAZARDOUS SUBSTANCE which should be handled by trained staff only.

---

Storage: -20 °C

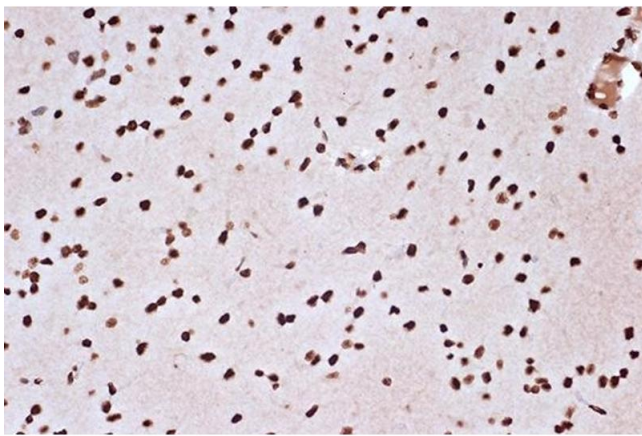
---

Storage Comment: Store at -20°C. Avoid freeze / thaw cycles.



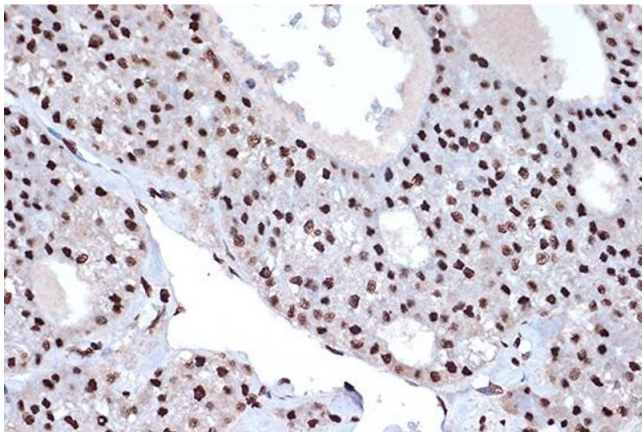
### Immunofluorescence

**Image 1.** Immunofluorescence analysis of C6 cells using macroH2A.1 Rabbit mAb (ABIN7267557) at dilution of 1:100 (40x lens). Blue: DAPI for nuclear staining.



### Immunohistochemistry

**Image 2.** Immunohistochemistry of paraffin-embedded rat brain using macroH2A.1 Rabbit mAb (ABIN7267557) at dilution of 1:100 (40x lens). Perform microwave antigen retrieval with 10 mM Tris/EDTA buffer pH 9.0 before commencing with IHC staining protocol.



### Immunohistochemistry

**Image 3.** Immunohistochemistry of paraffin-embedded human liver cancer using macroH2A.1 Rabbit mAb (ABIN7267557) at dilution of 1:100 (40x lens). Perform microwave antigen retrieval with 10 mM Tris/EDTA buffer pH 9.0 before commencing with IHC staining protocol.

Please check the [product details page](#) for more images. Overall 6 images are available for ABIN7267557.