



Datasheet for ABIN7267592

anti-HSPB6 antibody



[Go to Product page](#)

5 Images

Overview

Quantity:	100 µL
Target:	HSPB6
Reactivity:	Human
Host:	Rabbit
Clonality:	Monoclonal
Conjugate:	This HSPB6 antibody is un-conjugated
Application:	Western Blotting (WB), Immunohistochemistry (IHC), Immunofluorescence (IF)

Product Details

Purpose:	HSP20/HSPB6 Rabbit mAb
Immunogen:	A synthesized peptide derived from human HSP20/HSPB6
Isotype:	IgG
Cross-Reactivity:	Human, Mouse, Rat
Characteristics:	Monoclonal Antibodies
Purification:	Affinity purification

Target Details

Target:	HSPB6
Alternative Name:	HSPB6 (HSPB6 Products)
Background:	This locus encodes a heat shock protein. The encoded protein likely plays a role in smooth

Target Details

muscle relaxation. [provided by RefSeq, Jan 2012],HEL55, Hsp20,
PPP1R91,Apoptosis,Cardiovascular,Heart,HSPB6

Molecular Weight: 17kDa

Gene ID: 126393

UniProt: [O14558](#)

Application Details

Application Notes: WB,1:500 - 1:2000,IHC,1:50 - 1:200,IF,1:50 - 1:200

Restrictions: For Research Use only

Handling

Format: Liquid

Buffer: PBS with 0.02 % sodium azide,0.05 % BSA,50 % glycerol, pH 7.3.

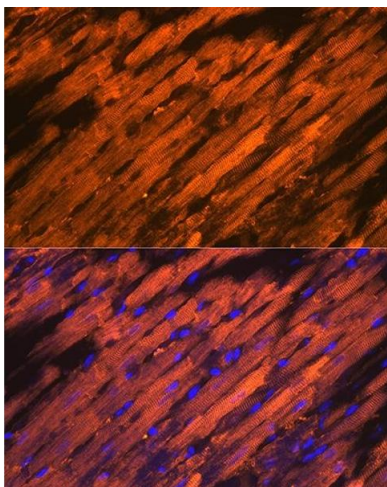
Preservative: Sodium azide

Precaution of Use: This product contains Sodium azide: a POISONOUS AND HAZARDOUS SUBSTANCE which should be handled by trained staff only.

Storage: -20 °C

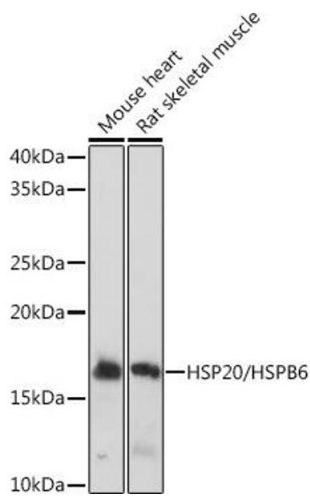
Storage Comment: Store at -20°C. Avoid freeze / thaw cycles.

Images



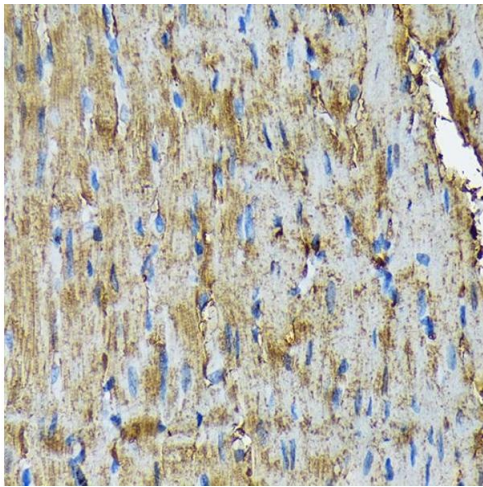
Immunofluorescence

Image 1. Immunofluorescence analysis of rat heart using HSP20/HSPB6 Rabbit mAb (ABIN7267592) at dilution of 1:100 (40x lens). Blue: DAPI for nuclear staining.



Western Blotting

Image 2. Western blot analysis of extracts of various cell lines, using HSP20/HSPB6 Rabbit mAb (ABIN7267592) at 1:1000 dilution. Secondary antibody: HRP Goat Anti-Rabbit IgG (H+L) (ABIN1684268 and ABIN3020597) at 1:10000 dilution. Lysates/proteins: 25 µg per lane. Blocking buffer: 3 % nonfat dry milk in TBST. Detection: ECL Basic Kit (RM00020). Exposure time: 1s.



Immunohistochemistry

Image 3. Immunohistochemistry of paraffin-embedded rat heart using HSP20/HSPB6 Rabbit mAb (ABIN7267592) at dilution of 1:100 (40x lens). Perform microwave antigen retrieval with 10 mM Tris/EDTA buffer pH 9.0 before commencing with IHC staining protocol.

Please check the [product details page](#) for more images. Overall 5 images are available for ABIN7267592.