



[Go to Product page](#)

Datasheet for ABIN7267600

anti-HLTF antibody

1 Image

Overview

Quantity:	100 µL
Target:	HLTF
Reactivity:	Human
Host:	Rabbit
Clonality:	Monoclonal
Conjugate:	This HLTF antibody is un-conjugated
Application:	Western Blotting (WB)

Product Details

Purpose:	HLTF Rabbit mAb
Immunogen:	A synthesized peptide derived from human HLTF
Isotype:	IgG
Cross-Reactivity:	Human, Mouse, Rat
Characteristics:	Monoclonal Antibodies
Purification:	Affinity purification

Target Details

Target:	HLTF
Alternative Name:	HLTF (HLTF Products)
Background:	This gene encodes a member of the SWI/SNF family. Members of this family have helicase and

Target Details

ATPase activities and are thought to regulate transcription of certain genes by altering the chromatin structure around those genes. The encoded protein contains a RING finger DNA binding motif. Two transcript variants encoding the same protein have been found for this gene. However, use of an alternative translation start site produces an isoform that is truncated at the N-terminus compared to the full-length protein. [provided by RefSeq, Jul 2008],HIP116, HIP116A, HLTF1, RNF80, SMARCA3, SNF2L3, ZBU1,Cancer,Cell Biology & Developmental Biology,Chromatin Remodeling,Epigenetics & Nuclear Signaling,RNA Binding,Tumor suppressors,Ubiquitin,HLTF

Molecular Weight: 120kDa

Gene ID: 6596

UniProt: [Q14527](#)

Application Details

Application Notes: WB,1:500 - 1:2000

Restrictions: For Research Use only

Handling

Format: Liquid

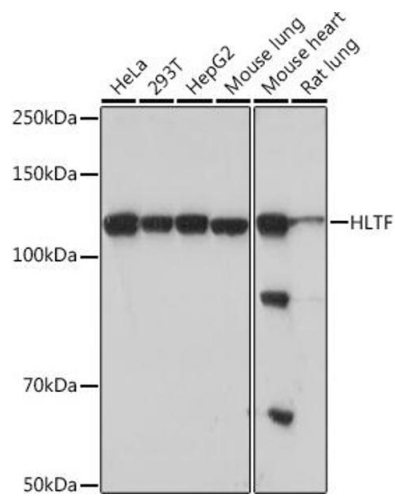
Buffer: PBS with 0.02 % sodium azide,0.05 % BSA,50 % glycerol, pH 7.3.

Preservative: Sodium azide

Precaution of Use: This product contains Sodium azide: a POISONOUS AND HAZARDOUS SUBSTANCE which should be handled by trained staff only.

Storage: -20 °C

Storage Comment: Store at -20°C. Avoid freeze / thaw cycles.



Western Blotting

Image 1. Western blot analysis of extracts of various cell lines, using HLTF Rabbit mAb (ABIN7267600) at 1:1000 dilution. Secondary antibody: HRP Goat Anti-Rabbit IgG (H+L) (ABIN1684268 and ABIN3020597) at 1:10000 dilution. Lysates/proteins: 25 µg per lane. Blocking buffer: 3% nonfat dry milk in TBST. Detection: ECL Basic Kit (RM00020). Exposure time: 30s.