

Datasheet for ABIN7267616

anti-HBEGF antibody[Go to Product page](#)**1** Image

Overview

Quantity:	100 µL
Target:	HBEGF
Reactivity:	Human
Host:	Rabbit
Clonality:	Monoclonal
Conjugate:	This HBEGF antibody is un-conjugated
Application:	Western Blotting (WB)

Product Details

Purpose:	[KO Validated] HB-EGF Rabbit mAb
Immunogen:	A synthesized peptide derived from human HB-EGF
Isotype:	IgG
Cross-Reactivity:	Human, Mouse, Rat
Characteristics:	Monoclonal Antibodies
Purification:	Affinity purification
Grade:	KO Validated

Target Details

Target:	HBEGF
Alternative Name:	HBEGF (HBEGF Products)

Target Details

Background:	<p>Heparin-binding EGF-like growth factor (HB-EGF) is a 12-16 kDa member of the epidermal growth factor (EGF)family. It possesses an EGF-like domain, and a heparin-binding motif.</p> <p>Mature HB-EGF is a soluble peptide thatarises from proteolytic processing of the transmembrane form. Human HB -EGF shows 76 % and 73 % aasequence identity with rat and mouse HB-EGF, respectively. It is required for normal cardiac valve formationand normal heart function, promotes smooth muscle cell proliferation. It may be involved in macrophage-mediated cellular proliferation, it is mitogenic for fibroblasts, but not endothelial cells. HB-EGF classified as agroup 2 ErbB ligand based on its ability to activate both the EGF/ErbB1 and ErbB4 receptors. Activityassociated with ErbB4 binding appears to be limited to non -mitogenic actions, while EGFR binding inducesboth mitogenic and non-mitogenic activity.,DTR, DTS, DTSF, HEGFL,Angiogenesis,Angiogenesis_Angiogenic growth factors,Cancer,Cardiovascular,Cell Biology & Developmental Biology,ErbB-HER Signaling Pathway,Growth factors,Growth factors_EGF,Invasion and Metastasis,Signal Transduction,HBEGF</p>
Molecular Weight:	23kDa
Gene ID:	1839
UniProt:	Q99075
Pathways:	RTK Signaling , Fc-epsilon Receptor Signaling Pathway , EGFR Signaling Pathway , Neurotrophin Signaling Pathway

Application Details

Application Notes:	WB,1:500 - 1:2000
Restrictions:	For Research Use only

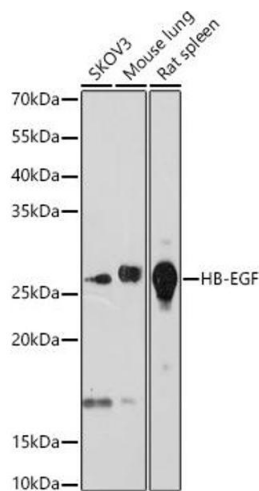
Handling

Format:	Liquid
Buffer:	PBS with 0.02 % sodium azide,0.05 % BSA,50 % glycerol, pH 7.3.
Preservative:	Sodium azide
Precaution of Use:	This product contains Sodium azide: a POISONOUS AND HAZARDOUS SUBSTANCE which should be handled by trained staff only.
Storage:	-20 °C

Handling

Storage Comment: Store at -20°C. Avoid freeze / thaw cycles.

Images



Western Blotting

Image 1. Western blot analysis of extracts of various cell lines, using HB-EGF antibody (ABIN7267616) at 1:1000 dilution. Secondary antibody: HRP Goat Anti-Rabbit IgG (H+L) (ABIN1684268 and ABIN3020597) at 1:10000 dilution. Lysates/proteins: 25 µg per lane. Blocking buffer: 3 % nonfat dry milk in TBST. Detection: ECL Basic Kit (RM00020). Exposure time: 90s.