



[Go to Product page](#)

Datasheet for ABIN7267624

anti-HES1 antibody

4 Images

Overview

| | |
|--------------|---|
| Quantity: | 100 µL |
| Target: | HES1 |
| Reactivity: | Human |
| Host: | Rabbit |
| Clonality: | Monoclonal |
| Conjugate: | This HES1 antibody is un-conjugated |
| Application: | Western Blotting (WB), Immunohistochemistry (IHC), Immunoprecipitation (IP) |

Product Details

| | |
|-------------------|---|
| Purpose: | HES1 Rabbit mAb |
| Immunogen: | A synthesized peptide derived from human HES1 |
| Isotype: | IgG |
| Cross-Reactivity: | Mouse, Rat |
| Characteristics: | Monoclonal Antibodies |
| Purification: | Affinity purification |

Target Details

| | |
|-------------------|---|
| Target: | HES1 |
| Alternative Name: | HES1 (HES1 Products) |
| Background: | This protein belongs to the basic helix-loop-helix family of transcription factors. It is a |

Target Details

transcriptional repressor of genes that require a bHLH protein for their transcription. The protein has a particular type of basic domain that contains a helix interrupting protein that binds to the N-box rather than the canonical E-box. [provided by RefSeq, Jul 2008],HES-1, HHL, HRY, bHLHb39,Epigenetics & Nuclear Signaling,Neuroscience,Transcription Factors,HES1

Molecular Weight: 30kDa

Gene ID: 3280

UniProt: [Q14469](#)

Pathways: [DNA Damage Repair](#)

Application Details

Application Notes: WB,1:500 - 1:2000,IHC,1:50 - 1:200,IP,1:50 - 1:200

Restrictions: For Research Use only

Handling

Format: Liquid

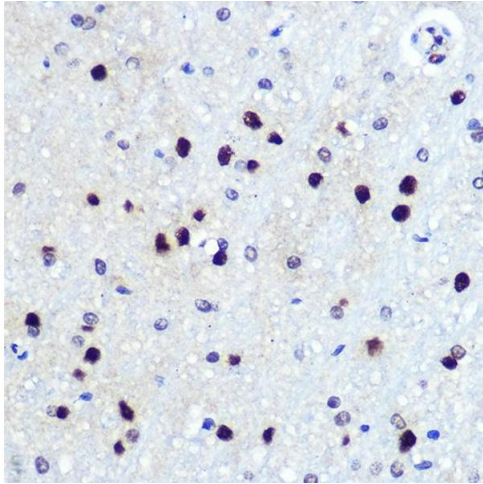
Buffer: PBS with 0.02 % sodium azide,0.05 % BSA,50 % glycerol, pH 7.3.

Preservative: Sodium azide

Precaution of Use: This product contains Sodium azide: a POISONOUS AND HAZARDOUS SUBSTANCE which should be handled by trained staff only.

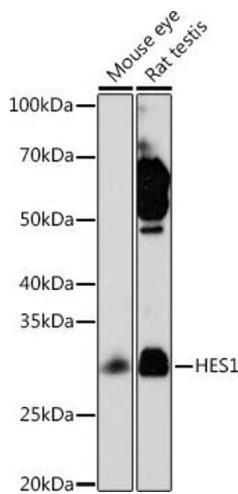
Storage: -20 °C

Storage Comment: Store at -20°C. Avoid freeze / thaw cycles.



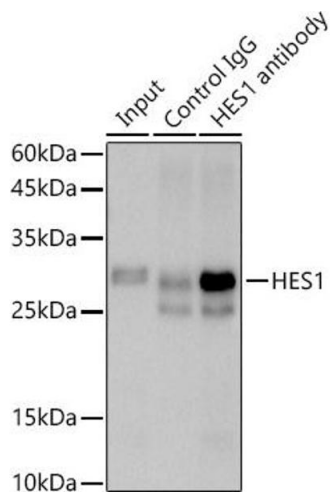
Immunohistochemistry

Image 1. Immunohistochemistry of paraffin-embedded rat brain using HES1 Rabbit mAb (ABIN7267624) at dilution of 1:100 (40x lens). Perform microwave antigen retrieval with 10 mM PBS buffer pH 7.2 before commencing with IHC staining protocol.



Western Blotting

Image 2. Western blot analysis of extracts of various cell lines, using HES1 Rabbit mAb (ABIN7267624) at 1:1000 dilution. Secondary antibody: HRP Goat Anti-Rabbit IgG (H+L) (ABIN1684268 and ABIN3020597) at 1:10000 dilution. Lysates/proteins: 25 µg per lane. Blocking buffer: 3 % nonfat dry milk in TBST. Detection: ECL Basic Kit (RM00020). Exposure time: 3 min.



Immunoprecipitation

Image 3. Immunoprecipitation analysis of 600 µg extracts of Rat testis cells using 3 µg HES1 antibody (ABIN7267624). Western blot was performed from the immunoprecipitate using HES1 antibody (ABIN7267624) at a dilution of 1:500.

Please check the [product details page](#) for more images. Overall 4 images are available for ABIN7267624.