



[Go to Product page](#)

Datasheet for ABIN7267638  
**anti-Hexokinase 1 antibody**

7 Images

### Overview

Quantity:	100 µL
Target:	Hexokinase 1 (HK1)
Reactivity:	Human
Host:	Rabbit
Clonality:	Monoclonal
Conjugate:	This Hexokinase 1 antibody is un-conjugated
Application:	Western Blotting (WB), Immunohistochemistry (IHC), Immunofluorescence (IF), Immunoprecipitation (IP)

### Product Details

Purpose:	[KO Validated] HK1 Rabbit mAb
Immunogen:	A synthesized peptide derived from human Hexokinase 1
Isotype:	IgG
Cross-Reactivity:	Human, Mouse, Rat
Characteristics:	Monoclonal Antibodies
Purification:	Affinity purification
Grade:	KO Validated

### Target Details

Target:	Hexokinase 1 (HK1)
---------	--------------------

## Target Details

---

Alternative Name: [HK1 \(HK1 Products\)](#)

---

Background: Hexokinases phosphorylate glucose to produce glucose-6-phosphate, the first step in most glucose metabolism pathways. This gene encodes a ubiquitous form of hexokinase which localizes to the outer membrane of mitochondria. Mutations in this gene have been associated with hemolytic anemia due to hexokinase deficiency. Alternative splicing of this gene results in several transcript variants which encode different isoforms, some of which are tissue-specific. [provided by RefSeq, Apr 2016],HK, HK1-ta, HK1-tb, HK1-tc, HKD, HKI, HMSNR, HXK1, hexokinase,Blood,Cancer,Carbohydrate metabolism,Cardiovascular,Endocrine & Metabolism,Heart,Heart\_Cardiac metabolism,Signal Transduction,Warburg Effect,HK1

---

Molecular Weight: 102kDa

---

Gene ID: 3098

---

UniProt: [P19367](#)

---

Pathways: [Carbohydrate Homeostasis](#), [Warburg Effect](#)

---

## Application Details

---

Application Notes: WB,1:500 - 1:2000,IHC,1:50 - 1:200,IF,1:50 - 1:200,IP,1:50 - 1:200

---

Restrictions: For Research Use only

---

## Handling

---

Format: Liquid

---

Buffer: PBS with 0.02 % sodium azide,0.05 % BSA,50 % glycerol, pH 7.3.

---

Preservative: Sodium azide

---

Precaution of Use: This product contains Sodium azide: a POISONOUS AND HAZARDOUS SUBSTANCE which should be handled by trained staff only.

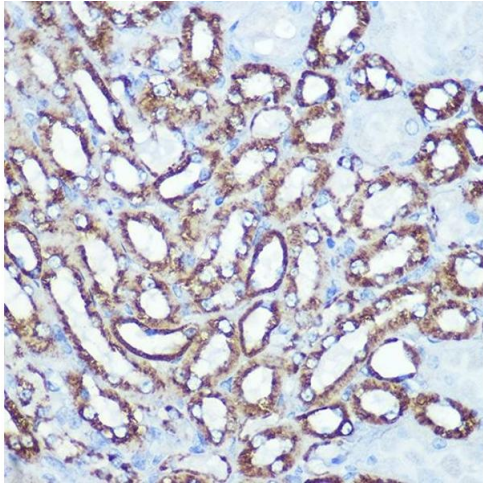
---

Storage: -20 °C

---

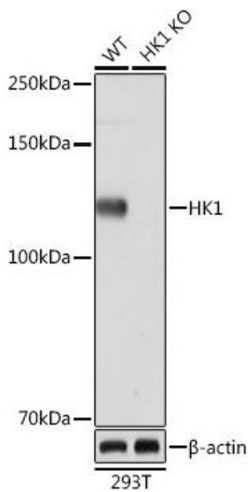
Storage Comment: Store at -20°C. Avoid freeze / thaw cycles.

---



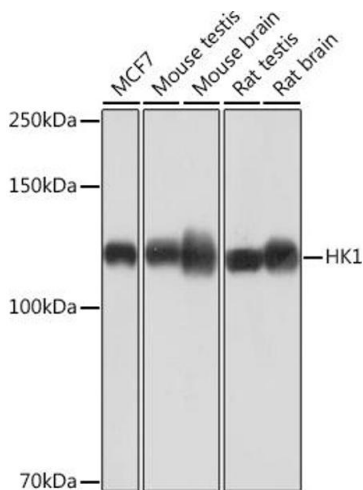
### Immunohistochemistry

**Image 1.** Immunohistochemistry of paraffin-embedded mouse kidney using HK1 Rabbit mAb (ABIN7267638) at dilution of 1:100 (40x lens). Perform microwave antigen retrieval with 10 mM PBS buffer pH 7.2 before commencing with IHC staining protocol.



### Western Blotting

**Image 2.** Western blot analysis of extracts from wild type (WT) and HK1 knockout (KO) 293T cells, using HK1 Rabbit mAb (ABIN7267638) at 1:1000 dilution. Secondary antibody: HRP Goat Anti-Rabbit IgG (H+L) (ABIN1684268 and ABIN3020597) at 1:10000 dilution. Lysates/proteins: 25 µg per lane. Blocking buffer: 3% nonfat dry milk in TBST. Detection: ECL Basic Kit (RM00020). Exposure time: 60s.



### Western Blotting

**Image 3.** Western blot analysis of extracts of various cell lines, using HK1 Rabbit mAb (ABIN7267638) at 1:1000 dilution. Secondary antibody: HRP Goat Anti-Rabbit IgG (H+L) (ABIN1684268 and ABIN3020597) at 1:10000 dilution. Lysates/proteins: 25 µg per lane. Blocking buffer: 3% nonfat dry milk in TBST. Detection: ECL Basic Kit (RM00020). Exposure time: 60s.

Please check the [product details page](#) for more images. Overall 7 images are available for ABIN7267638.