



[Go to Product page](#)

Datasheet for ABIN7267641
anti-HKDC1 antibody (AA 150-250)

1 Image

Overview

Quantity:	100 µL
Target:	HKDC1
Binding Specificity:	AA 150-250
Reactivity:	Human
Host:	Rabbit
Clonality:	Polyclonal
Conjugate:	This HKDC1 antibody is un-conjugated
Application:	Western Blotting (WB)

Product Details

Purpose:	HKDC1 Rabbit pAb
Immunogen:	A synthetic peptide corresponding to a sequence within amino acids 150-250 of human HKDC1 (NP_079406.3).
Sequence:	LGLTFSFPCR QTKLEEGVLL SWTKKFKARG VQDTDVVSRL TKAMRRHKDM DVDILALVND TVGTMMTCA YDDPYCEVGV IGTGTNACYM EDMSNIDLVE G
Isotype:	IgG
Cross-Reactivity:	Human
Characteristics:	Polyclonal Antibodies
Purification:	Affinity purification

Target Details

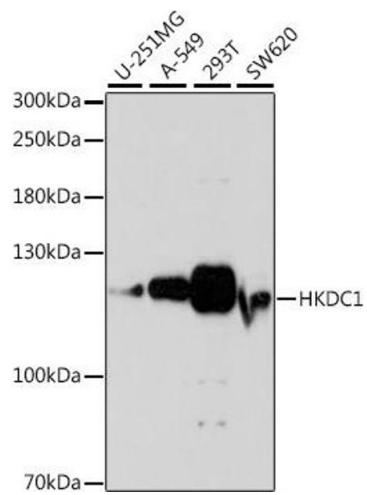
Target:	HKDC1
Alternative Name:	HKDC1 (HKDC1 Products)
Background:	This gene encodes a member of the hexokinase protein family. The encoded protein is involved in glucose metabolism, and reduced expression may be associated with gestational diabetes mellitus. High expression of this gene may also be associated with poor prognosis in hepatocarcinoma.,HKDC1,Signal Transduction,Endocrine & Metabolism,Mitochondrial metabolism,Mitochondrial markers,HKDC1
Molecular Weight:	82kDa/90kDa/102kDa
Gene ID:	80201
UniProt:	Q2TB90

Application Details

Application Notes:	WB,1:500 - 1:2000
Restrictions:	For Research Use only

Handling

Format:	Liquid
Buffer:	PBS with 0.02 % sodium azide,50 % glycerol, pH 7.3.
Preservative:	Sodium azide
Precaution of Use:	This product contains Sodium azide: a POISONOUS AND HAZARDOUS SUBSTANCE which should be handled by trained staff only.
Storage:	-20 °C
Storage Comment:	Store at -20°C. Avoid freeze / thaw cycles.



Western Blotting

Image 1. Western blot analysis of extracts of various cell lines, using HKDC1 antibody (ABIN7267641) at 1:1000 dilution. Secondary antibody: HRP Goat Anti-Rabbit IgG (H+L) (ABIN1684268 and ABIN3020597) at 1:10000 dilution. Lysates/proteins: 25 µg per lane. Blocking buffer: 3 % nonfat dry milk in TBST. Detection: ECL Basic Kit (RM00020). Exposure time: 60s.