

Datasheet for ABIN7267648

**anti-HMGB1 antibody**

## 7 Images

[Go to Product page](#)

## Overview

Quantity:	100 µL
Target:	HMGB1
Reactivity:	Human
Host:	Rabbit
Clonality:	Monoclonal
Conjugate:	This HMGB1 antibody is un-conjugated
Application:	Western Blotting (WB), Immunohistochemistry (IHC), Immunofluorescence (IF)

## Product Details

Purpose:	[KO Validated] HMGB1 Rabbit mAb
Immunogen:	A synthesized peptide derived from human HMGB1.
Isotype:	IgG
Cross-Reactivity:	Human, Mouse, Rat
Characteristics:	Monoclonal Antibodies
Purification:	Affinity purification
Grade:	KO Validated

## Target Details

Target:	HMGB1
Alternative Name:	HMGB1 ( <a href="#">HMGB1 Products</a> )

## Target Details

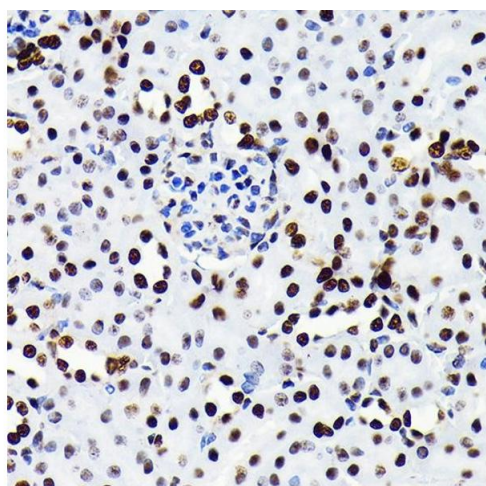
Background:	This gene encodes a protein that belongs to the High Mobility Group-box superfamily. The encoded non-histone, nuclear DNA-binding protein regulates transcription, and is involved in organization of DNA. This protein plays a role in several cellular processes, including inflammation, cell differentiation and tumor cell migration. Multiple pseudogenes of this gene have been identified. Alternative splicing results in multiple transcript variants that encode the same protein. [provided by RefSeq, Sep 2015],HMG-1,HMG1,HMG3,SBP-1,HMGB1,Apoptosis,Cell Biology & Developmental Biology,Epigenetics & Nuclear Signaling,Histones,RNA Binding,HMGB1
Molecular Weight:	25kDa
Gene ID:	3146
UniProt:	<a href="#">P09429</a>
Pathways:	<a href="#">p53 Signaling</a> , <a href="#">Regulation of Muscle Cell Differentiation</a> , <a href="#">Skeletal Muscle Fiber Development</a> , <a href="#">Positive Regulation of Endopeptidase Activity</a> , <a href="#">Regulation of Carbohydrate Metabolic Process</a> , <a href="#">Toll-Like Receptors Cascades</a> , <a href="#">Smooth Muscle Cell Migration</a> , <a href="#">Inflammasome</a>

## Application Details

Application Notes:	WB,1:500 - 1:2000,IHC,1:50 - 1:200,IF,1:50 - 1:200
Restrictions:	For Research Use only

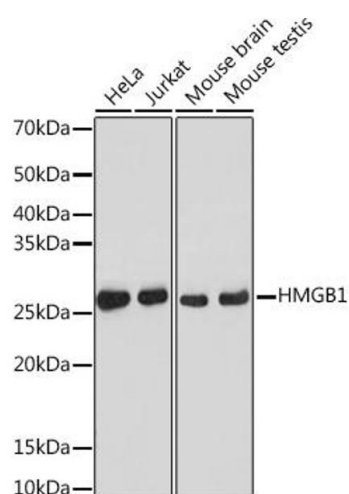
## Handling

Format:	Liquid
Buffer:	PBS with 0.02 % sodium azide,0.05 % BSA,50 % glycerol, pH 7.3.
Preservative:	Sodium azide
Precaution of Use:	This product contains Sodium azide: a POISONOUS AND HAZARDOUS SUBSTANCE which should be handled by trained staff only.
Storage:	-20 °C
Storage Comment:	Store at -20°C. Avoid freeze / thaw cycles.



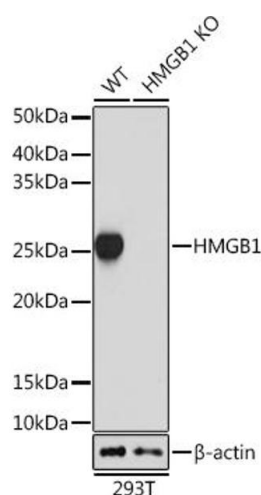
### Immunohistochemistry

**Image 1.** Immunohistochemistry of paraffin-embedded Mouse kidney using HMGB1 antibody (ABIN7267648) at dilution of 1:100 (40x lens). Perform microwave antigen retrieval with 10 mM PBS buffer pH 7.2 before commencing with IHC staining protocol.



### Western Blotting

**Image 2.** Western blot analysis of extracts of various cell lines, using HMGB1 antibody (ABIN7267648) at 1:1000 dilution. Secondary antibody: HRP Goat Anti-Rabbit IgG (H+L) (ABIN1684268 and ABIN3020597) at 1:10000 dilution. Lysates/proteins: 25 µg per lane. Blocking buffer: 3 % nonfat dry milk in TBST. Detection: ECL Basic Kit (RM00020). Exposure time: 5s.



### Western Blotting

**Image 3.** Western blot analysis of extracts from wild type (WT) and HMGB1 knockout (KO) 293T cells, using HMGB1 antibody (ABIN7267648) at 1:1000 dilution. Secondary antibody: HRP Goat Anti-Rabbit IgG (H+L) (ABIN1684268 and ABIN3020597) at 1:10000 dilution. Lysates/proteins: 25 µg per lane. Blocking buffer: 3 % nonfat dry milk in TBST. Detection: ECL Basic Kit (RM00020). Exposure time: 5s.

Please check the [product details page](#) for more images. Overall 7 images are available for ABIN7267648.