



[Go to Product page](#)

Datasheet for ABIN7267653
anti-Hippocalcin antibody

1 Image

Overview

| | |
|--------------|--|
| Quantity: | 100 µL |
| Target: | Hippocalcin (HPCA) |
| Reactivity: | Human |
| Host: | Rabbit |
| Clonality: | Monoclonal |
| Conjugate: | This Hippocalcin antibody is un-conjugated |
| Application: | Western Blotting (WB) |

Product Details

| | |
|-------------------|--|
| Purpose: | Hippocalcin (HPCA) Rabbit mAb |
| Immunogen: | A synthesized peptide derived from human Hippocalcin (HPCA) (HPCA) |
| Isotype: | IgG |
| Cross-Reactivity: | Human, Mouse, Rat |
| Characteristics: | Monoclonal Antibodies |
| Purification: | Affinity purification |

Target Details

| | |
|-------------------|--|
| Target: | Hippocalcin (HPCA) |
| Alternative Name: | HPCA (HPCA Products) |
| Background: | The protein encoded by this gene is a member of neuron-specific calcium-binding proteins |

Target Details

family found in the retina and brain. This protein is associated with the plasma membrane. It has similarities to proteins located in the photoreceptor cells that regulate photosignal transduction in a calcium-sensitive manner. This protein displays recoverin activity and a calcium-dependent inhibition of rhodopsin kinase. It is identical to the rat and mouse hippocalcin proteins and thought to play an important role in neurons of the central nervous system in a number of species. [provided by RefSeq, Jul 2008],BDR2, DYT2,Calcium Signaling,Cell Type Marker,Cell Type Marker_Neuron marker,Cell Type Marker_Synapse marker,Neuroscience,HPCA

Molecular Weight: 26kDa

Gene ID: 3208

UniProt: [P84074](#)

Application Details

Application Notes: WB,1:500 - 1:2000

Restrictions: For Research Use only

Handling

Format: Liquid

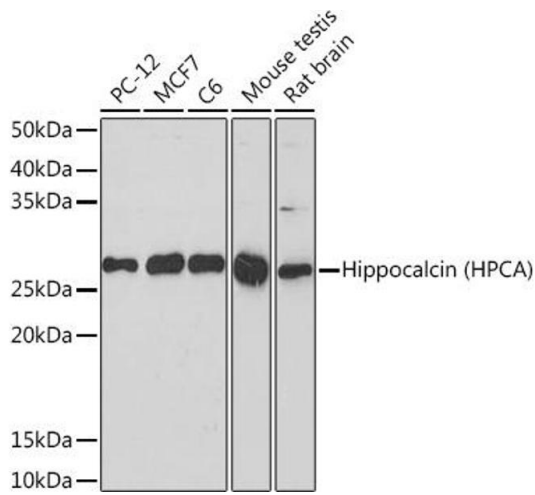
Buffer: PBS with 0.02 % sodium azide,0.05 % BSA,50 % glycerol, pH 7.3.

Preservative: Sodium azide

Precaution of Use: This product contains Sodium azide: a POISONOUS AND HAZARDOUS SUBSTANCE which should be handled by trained staff only.

Storage: -20 °C

Storage Comment: Store at -20°C. Avoid freeze / thaw cycles.



Western Blotting

Image 1. Western blot analysis of extracts of various cell lines, using Hippocalcin (HPCA) (HPCA) Rabbit mAb (ABIN7267653) at 1:1000 dilution. Secondary antibody: HRP Goat Anti-Rabbit IgG (H+L) (ABIN1684268 and ABIN3020597) at 1:10000 dilution. Lysates/proteins: 25 µg per lane. Blocking buffer: 3% nonfat dry milk in TBST. Detection: ECL Basic Kit (RM00020). Exposure time: 180s.